

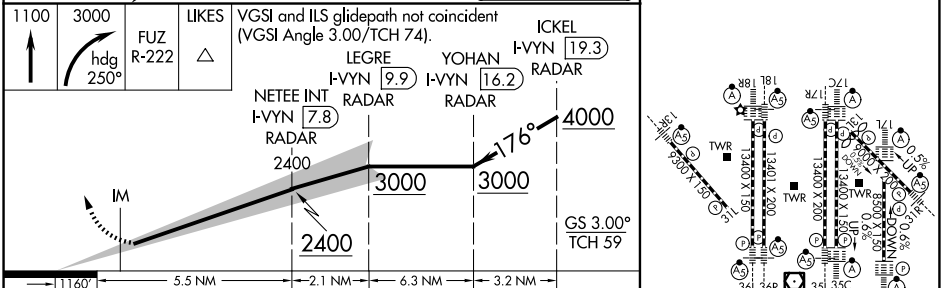
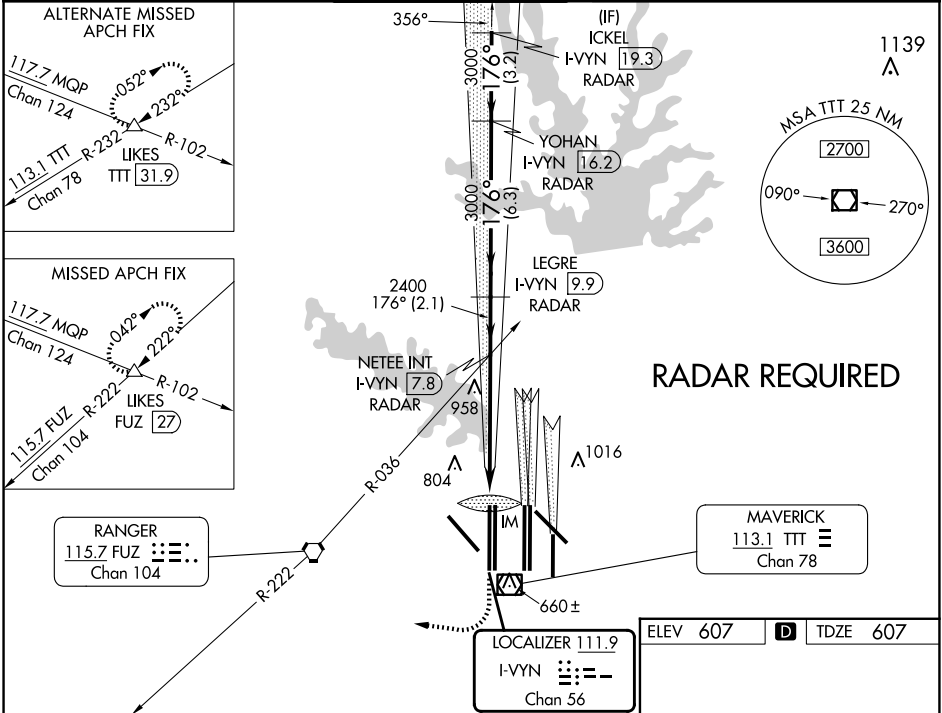
LOC/DME I-VYV 111.9 Chan 56	APP CRS 176°	Rwy Ldg TDZE Apt Elev 13400 607 607	ILS RWY 18R (SA CAT I) DALLAS-FORT WORTH INTL (DFW)
---	------------------------	---	---

DME or RADAR required. Simultaneous approach authorized with Rwy 17 L/C/R. Requires specific OPSPEC, MSPEC, or LOA approval and use of HUD to DH.

Rwy 18R
ALSF-2

MISSED APPROACH: Climb to 1100 then climbing right turn to 3000 on heading 250° and FUZ VORTAC R-222 to LIKES INT/FUZ VORTAC 27 DME and hold.

D-ATIS ARR 123.775 DEP 135.925	LONE STAR APP CON 118.425	DFW TOWER 126.55 127.5 124.15 134.9 EAST WEST	GND CON 121.65 121.8 EAST WEST 121.85 WEST	CLNC DEL 128.25	CPDLC
--	-------------------------------------	---	--	---------------------------	-------



1100	3000	LIKES	VGSI and ILS glidepath not coincident (VGSI Angle 3.00/TCH 74).	ICKEL I-VYV [19.3] RADAR
FUZ R-222	△	LEGRE I-VYV [9.9] RADAR	YOHAN I-VYV [16.2] RADAR	NETEE INT I-VYV [7.8] RADAR
IM	2400	3000	3000	4000
1160	5.5 NM	2.1 NM	6.3 NM	3.2 NM
CATEGORY	A	B	C	D
S-ILS 18R	RA 158/14 150 DA 757			
SA CATEGORY I ILS - SPECIAL AIRCREW & AIRCRAFT CERTIFICATION REQUIRED				