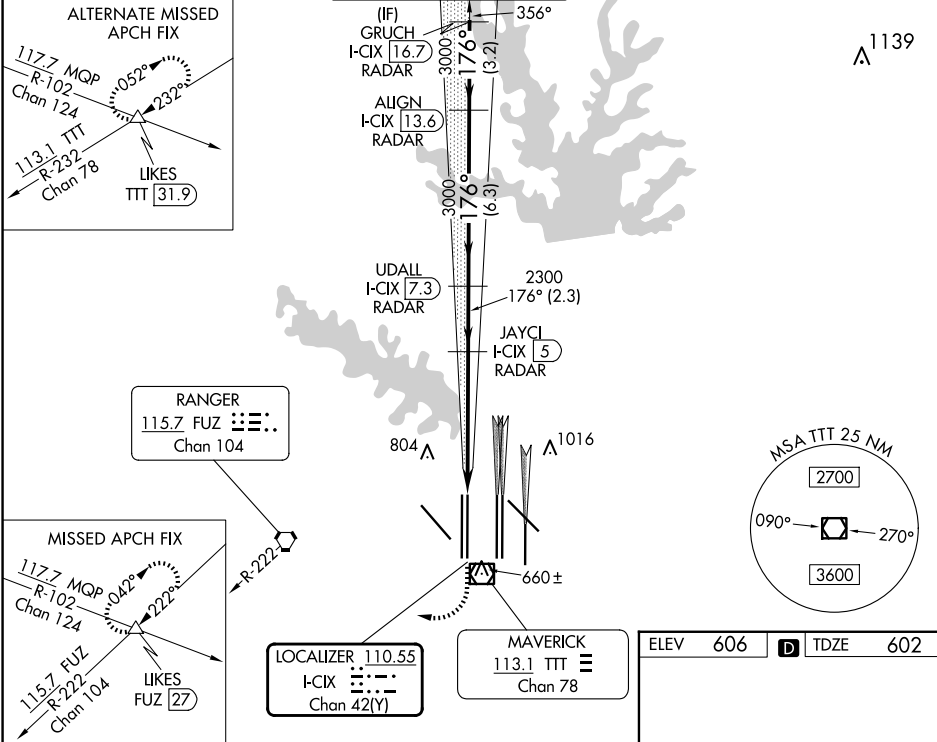


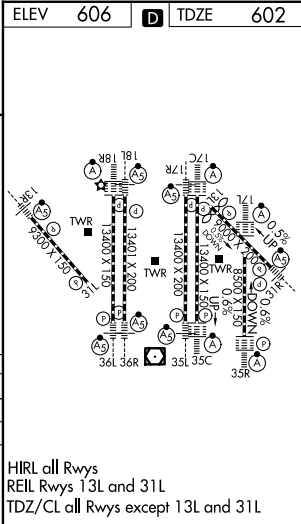
LOC/DME I-CIX	APP CRS	Rwy Ldg	13401
110.55	176°	TDZE	602
Chan 42(Y)		Apt Elev	606

ILS RWY 18L (SA CAT I & II)
DALLAS-FORT WORTH INTL (DFW)

RADAR required for procedure entry. DME or RADAR required.		MALSR	MISSED APPROACH: Climb to 1100, then climbing right turn to 3000 on heading 245° and FUZ VORTAC R-222 to LIKES INT/FUZ 27 DME and hold.		
D-ATIS	LONE STAR APP CON	DFW TOWER	GND CON	CLNC DEL	CPDLC
ARR 123.775 DEP 135.925	118.425	126.55 127.5 EAST 124.15 134.9 WEST	121.65 121.8 EAST 121.85 WEST	128.25	



1100	3000	FUZ R-222	LIKES
↑	hdg 245°		△
VGSI and ILS glidepath not coincident (VGSI Angle 3.00/TCH 70).			
2300	3000	3000	4000
1180°	5.2 NM	2.3 NM	6.3 NM
3.2 NM			
GS 3.00°			TCH 55
CATEGORY	A	B	C
S-ILS 18L	SA CAT I	RA 158/14	150 DA 752
S-ILS 18L	SA CAT II	RA 115/12	100 DA 702



SA CATEGORY I & II ILS - SPECIAL AIRCREW & AIRCRAFT CERTIFICATION REQUIRED

HIRL all Rwys
REIL Rwy 13L and 31L
TDZ/CL all Rwys except 13L and 31L