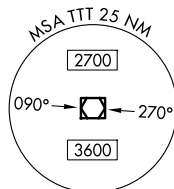
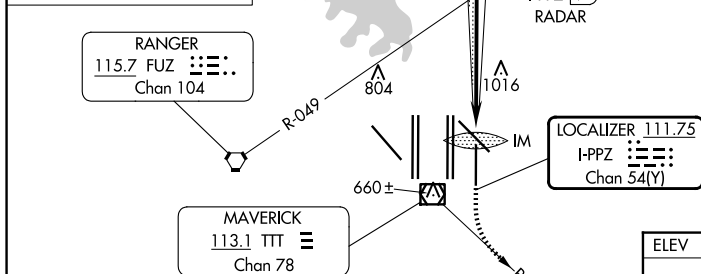
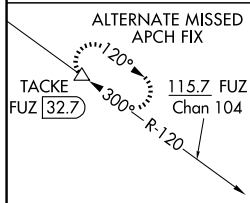


ILS RWY 17L (CAT II & III)
DALLAS-FORT WORTH INTL (DFW)

ALSF-2

MISSED APPROACH: Climb to 1020 then climbing left turn to 3000 on heading 151° and TTT VOR/DME R-127 to TACKE/TTT 26.5 DME and hold.



NAV AID	TYPE	FREQ
RIVET	I-PPZ	19.6
DRAAK	I-PPZ	16.4
INWOD	I-PPZ	10.1
GBUSH	I-PPZ	7

COMM	FREQ
TOWER	118.1
UNICOM	123.0
ATIS	121.7

5000 176° 5000 3000 2300 2300 1800

GS 3.00° TCH 56

3.2 NM 6.3 NM 3.1 NM 5.4 NM

VGSi and ILS glidepath not coincident (VGSi Angle 3.00/TCH 77)

1020 3000 TTT R-127

hdg 151°

TACKLE

IM 638

CATEGORY	A	B	C	D
S-ILS 17L	CAT II RA 122/12 100 DA 645			
S-ILS 17L	CAT IIIa RVR 07			
S-ILS 17L	CAT IIIb RVR 06			
S-ILS 17L	CAT IIIc NA			

CATEGORY II & III ILS - SPECIAL AIRCREW
& AIRCRAFT CERTIFICATION REQUIRED

HIRL all Rwys
REIL Rwys 13L and 31L
TDZ/CL all Rwys except 13L and 31L

