

(CAINE.CAINE2) 24305

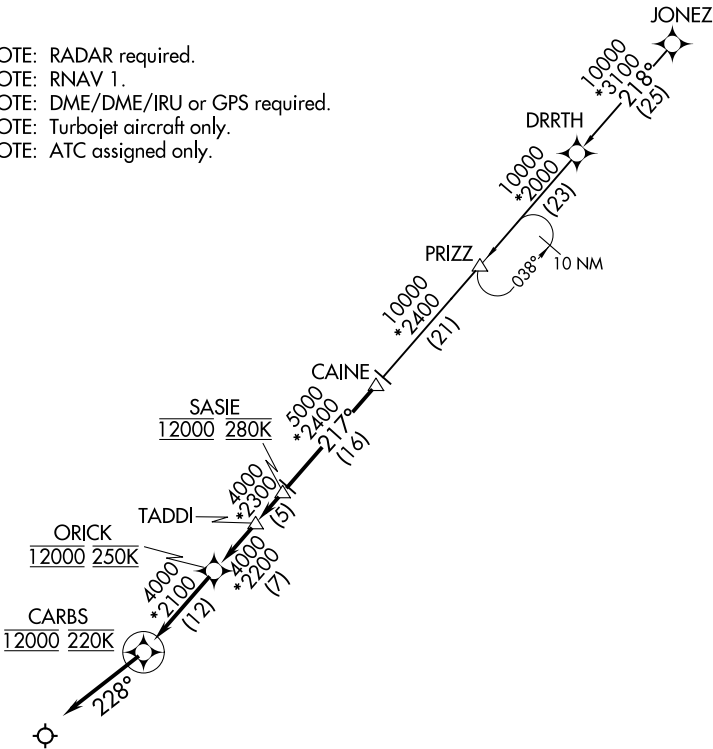
CAINE TWO ARRIVAL (RNAV)

AL-6039 (FAA)

DALLAS-FORT WORTH INTL (DFW)
DALLAS-FT. WORTH, TEXAS

LONE STAR APP CON
125.025 263.025
D-ATIS ARR
123.775

- NOTE: RADAR required.
- NOTE: RNAV 1.
- NOTE: DME/DME/IRU or GPS required.
- NOTE: Turbojet aircraft only.
- NOTE: ATC assigned only.



NOTE: Chart not to scale.

ARRIVAL ROUTE DESCRIPTION

JONEZ TRANSITION (JONEZ.CAINE2)

From CAINE on track 217° to cross SASIE at 12000 and at 280K, then on track 217° to TADDI, then on track 217° to cross ORICK at 12000 and at 250K, then on track 217° to cross CARBS at 12000 and at 220K, then on track 228°. Expect RADAR vectors to final approach course.

CAINE TWO ARRIVAL (RNAV)
(CAINE.CAINE2) 25JUN15

DALLAS-FT. WORTH, TEXAS
DALLAS-FORT WORTH INTL (DFW)

SC-2, 07 AUG 2025 to 04 SEP 2025

SC-2, 07 AUG 2025 to 04 SEP 2025