

## ARRIVAL ROUTE DESCRIPTION

From BREE on track 312° to cross BELLS between 15000 and 17000 and at 270K, then on track 312° to cross TACKLE between 13000 and 15000 and at 270K, then on track 312° to cross WARDZ between 12000 and 13000 and at 240K, then on track 312° to cross DIETZ at 12000 and at 210K, then on track 358° to WHOOT, then on track 356° to HEDMN, then on track 356°. Expect RADAR vectors to final approach course.

CRIED TRANSITION (CRIED.BERE3)

OUTLN TRANSITION (OUTLN.BERE3)

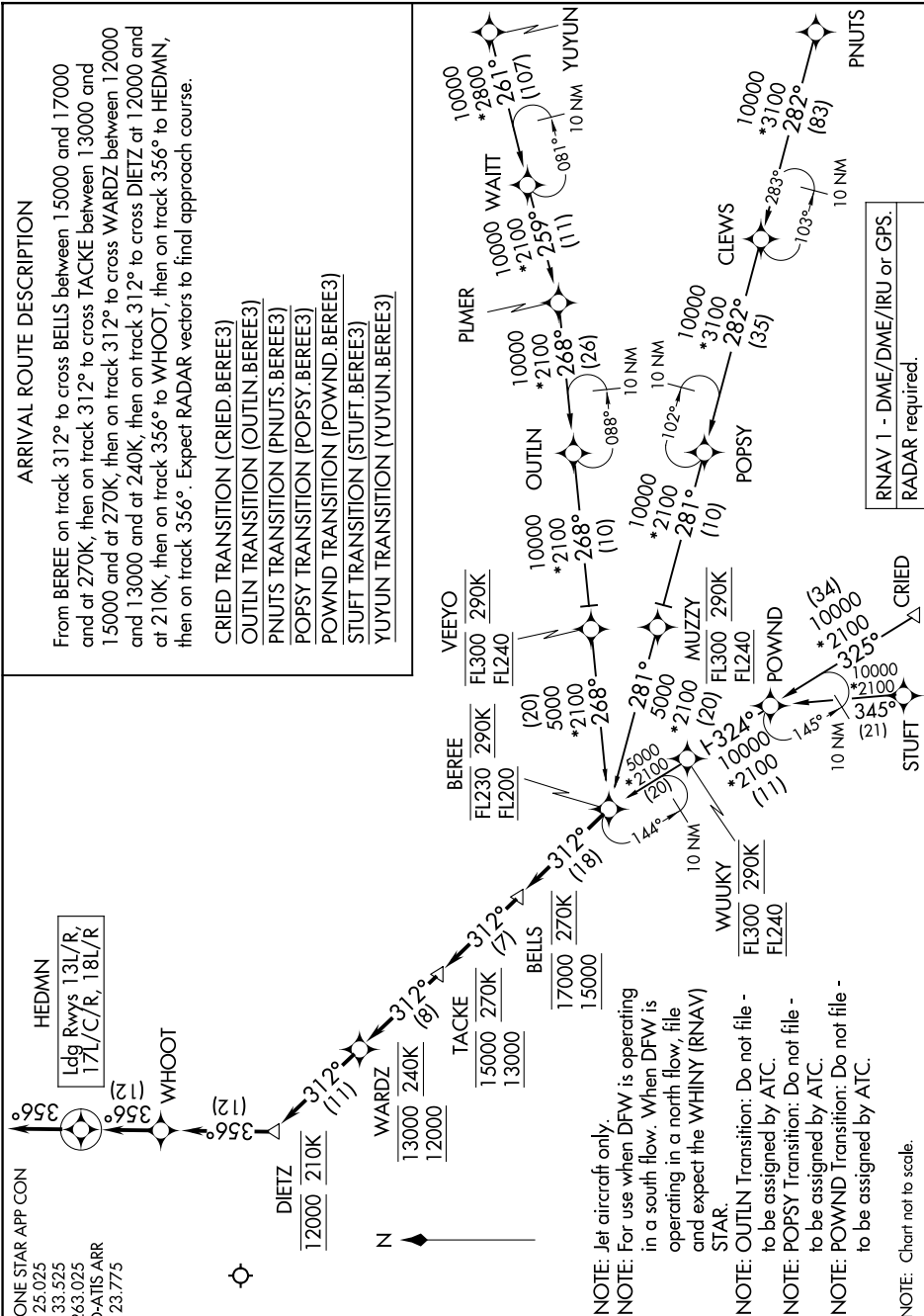
PNUTS TRANSITION (PNUTS.BFEE3)

POPSY TRANSITION (POPSY.BEREE3)

POWWD TRANSITION (POWWD.BEREE3)

STUFT TRANSITION (STUFT.BERE3)

YUYUN TRANSITION (YUYUN.BEREE3)



NOTE: Chart not to scale.