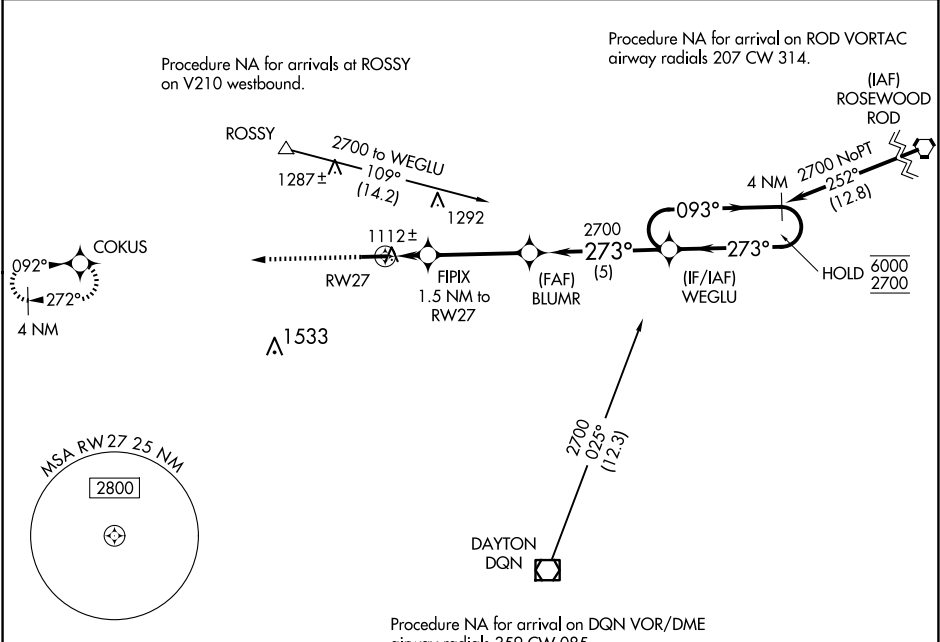


WAAS CH <b>86243</b> <b>W27A</b>	APP CRS <b>273°</b>	Rwy Idg <b>4802</b> TDZE <b>1007</b> Apt Elev <b>1007</b>
--	------------------------	---

RNAV (GPS) RWY 27

DARKE COUNTY (VES)

RNP APCH. ▼ Rwy 27 helicopter visibility reduction below 1 SM NA. Straight-in Rwy 27 NA at night, Circling Rwy 27 NA at night.		MISSED APPROACH: Climb to 2700 direct COKUS and hold.
AWOS-3PT <b>125.9</b>	COLUMBUS APP CON <b>134.45 352.05</b>	UNICOM <b>122.8 (CTAF) 0</b>



ELEV 1007	TDZE 1007
-----------	-----------

