

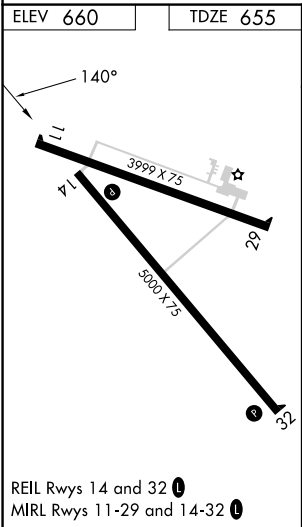
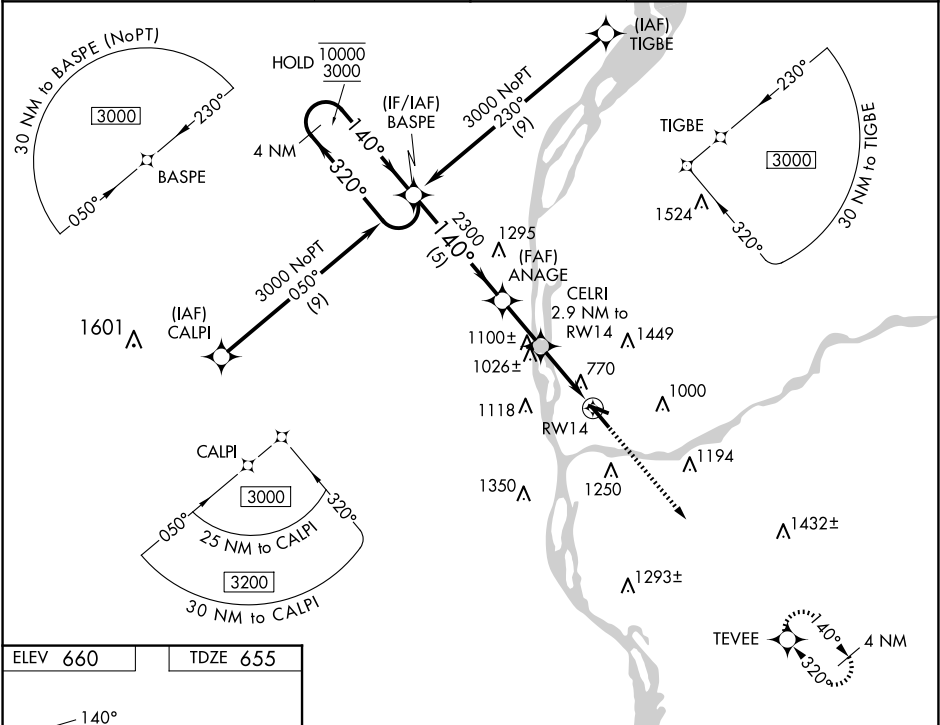
WAAS CH 48947 W14A	APP CRS 140°	Rwy Ldg TDZE 655 Apt Elev 660
----------------------------------------	------------------------	---------------------------------------------------

RNAV (GPS) RWY 14

PRAIRIE DU CHIEN MUNI (PDC)

RNP APCH - GPS.	MISSED APPROACH: Climb to 3000 direct TEVEE and hold.
<div><div>▼</div><div>▲</div></div> For uncompensated Baro-VNAV systems, LNAV/VNAV NA below -16°C or above 54°C. Circling Rwy 32 NA at night.	

AWOS-3 119.925	CHICAGO CENTER 133.95 281.4	UNICOM 122.8(CTAF) 0
--------------------------	---------------------------------------	--------------------------------



4 NM Holding Pattern BASPE				VGSi and RNAV glidepath not coincident (VGSi Angle 3.00/TCH 28).		3000	TEVEE
10000 3000				GP 3.00° TCH 45			
				5 NM	2.1 NM	1 NM	1.9
CATEGORY	A	B	C	D			
LPV DA	983-1		328 (400-1)				
LNAV/VNAV DA	1111-1⅓		456 (500-1⅓)				
LNAV MDA	1280-1		625 (700-1)		1280-1⅓ 625 (700-1⅓)		
CIRCLING	1580-1¼ 920 (1000-1¼)		1760-1½ 1100 (1100-1½)		1760-3 1100 (1100-3)		