

APP CRS  
**134°**

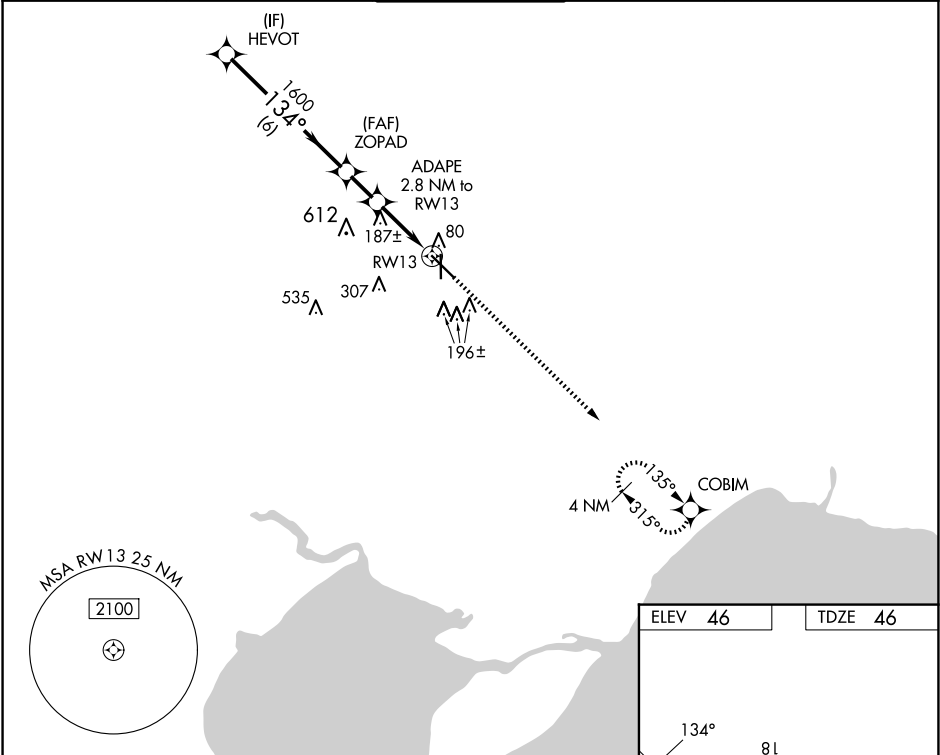
Rwy Ldg  
TDZE  
**46**

Apt Elev  
**46**

RNAV (GPS) RWY 13

HAMMOND NORTHSORE RGNL (HDC)

RNP APCH - GPS.				MISSED APPROACH: Climb to 2000 direct COBIM and hold.
Rwy 13 helicopter visibility reduction below ¾ SM NA. VDP NA when using Louis Armstrong New Orleans Intl altimeter setting. When local altimeter setting not received, use Louis Armstrong New Orleans Intl altimeter setting and increase all MDAs 100 feet and LNAV visibility Cat C/D ¼ SM, and Circling visibility Cat C/D ½ SM.				
ATIS 118.325	NEW ORLEANS APP CON 119.3 350.35	HAMMOND TOWER ★ 120.575 (CTAF) 0	GND CON 119.85	CLNC DEL 119.3 (When twr closed)



HEVOT

2000

134°

ZOPAD

1600

3.30° TCH 50

ADAPPE 2.8 NM to RW13

540

1 NM to RW13

RW13

2000 COBIM

6 NM

1.5 NM

1.8 NM

1 NM

CATEGORY	A	B	C	D
LNAV MDA	440-1	394 (400-1)	440-1½	394 (400-1½)
CIRCLING	500-1	454 (500-1)	620-1½ 574 (600-1½)	920-2¾ 874 (900-2¾)

REIL Rwy 13, 31 and 36 0

MIRL Rwy 13-31 and 18-36 0