

LOC I-HPF
111.5

APP CRS
180°

Rwy Ldg
TDZE **44**
Apt Elev **46**

ILS or LOC RWY 18

HAMMOND NORTHSORE RGNL (HDC)

ADF required.

▼
NA

For inop ALS, increase S-LOC 18 Cat C/D visibility to 1½ SM. When local altimeter setting not received, use Louis Armstrong New Orleans Intl altimeter setting and increase S-ILS 18 DA to 339 feet; increase all MDAs 100 feet and S-LOC 18 visibility Cat C/D ¼ SM, and Circling visibility Cat C/D ½ SM. For inop ALS when using Louis Armstrong New Orleans Intl altimeter setting, increase S-ILS all Cats visibility to ½ SM.

MALSR
A5

MISSED APPROACH:
Climb to 1800 then left turn on 345° bearing to ANGER LOM and hold.

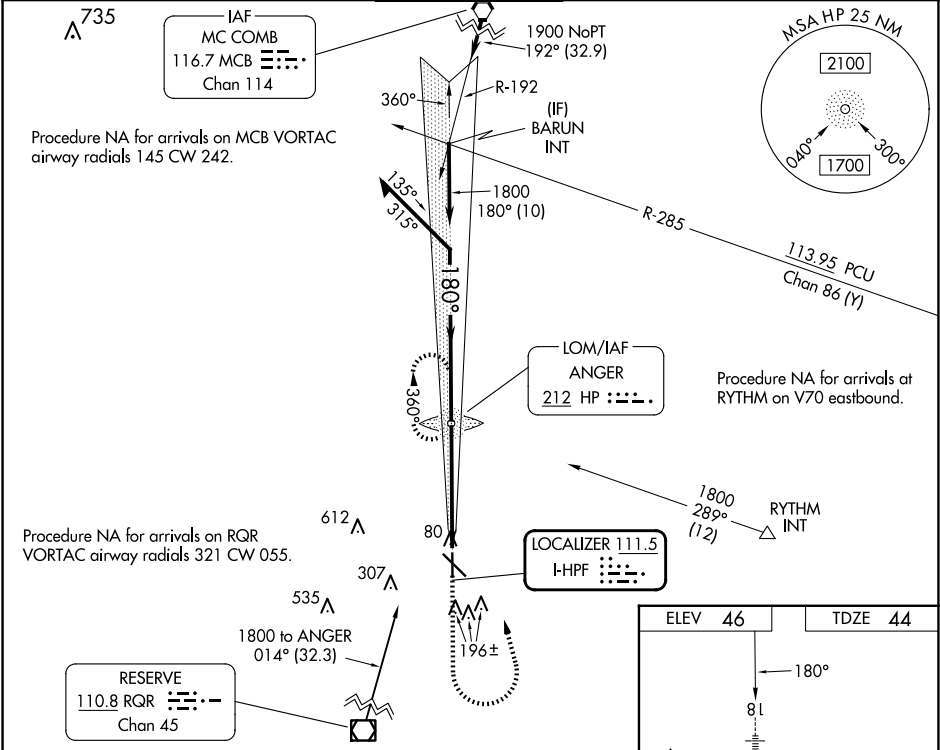
ATIS
118.325

NEW ORLEANS APP CON
119.3 350.35

HAMMOND TOWER ★
120.575 (CTAF) 0

GND CON
119.85

CLNC DEL
119.3
(When twr closed)



Remain within 10 NM

HP LOM ANGER

1800

1800

1800

GS 3.00° TCH 52

1598

4.7 NM

1800

345° brg

ANGER

CATEGORY	A	B	C	D
S-ILS 18	250-½ 206 (300-½)			
S-LOC 18	540-½ 496 (500-½)		540-1 496 (500-1)	
CIRCLING	540-1 494 (500-1)		620-1½ 574 (600-1½) 920-2¾ 874 (900-2¾)	

ELEV 46

TDZE 44

180°

81

5001 X 150

6502 X 100

36

TWR

REIL Rwy 13, 31 and 36

MIRL Rwy 13-31 and 18-36

FAF to MAP 4.7 NM

Knots	60	90	120	150	180
Min:Sec	4:42	3:08	2:21	1:53	1:34