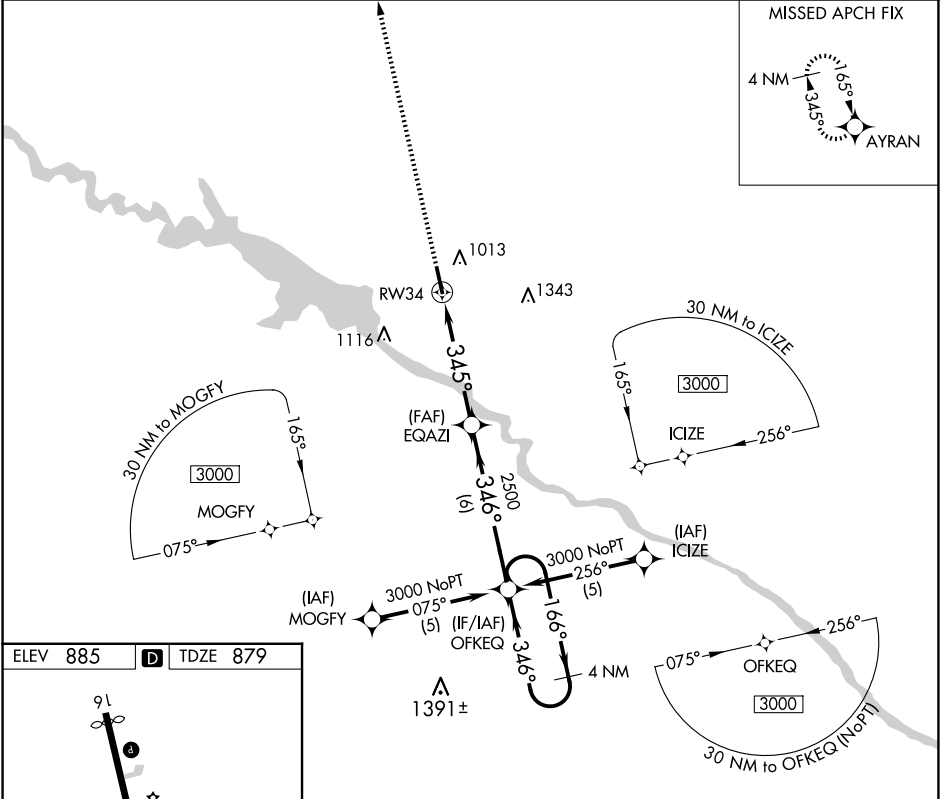


APP CRS	Rwy Idg	5000
345°	TDZE	879
	Apt Elev	885

RNAV (GPS) RWY 34
PELLA MUNI (PEA)

<p>⚠ DME/DME RNP -0.3 NA. Visibility reduction by helicopters NA. When local altimeter setting not received, use Knoxville altimeter setting and increase all MDAs 40 feet and Circling visibility Cat C ¼ SM.</p>	<p>MISSED APPROACH: Climb to 4000 direct AYRAN and hold.</p>
---	--

AWOS-3 118.875	DES MOINES APP CON 123.9 307.15	UNICOM 122.8 (CTAF) 📻
-------------------	------------------------------------	---------------------------------






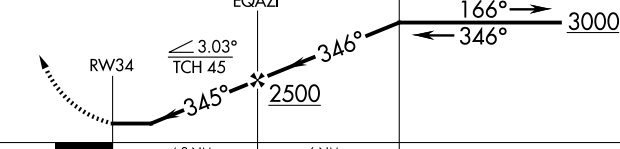
MIRL Rwy 16-34 
REIL Rwy 16 and 34 

Diagram of RWY 34 showing MRL (Medium Range Light) and REIL (Runway End Identifier Light) markings. The runway is 5403 x 75 feet. A 0.3% UP slope is indicated. The runway is oriented 345° to RW34.

4000 ↑	AYRAN 	VGSI and descent angles not coincident (VGSI Angle 3.00/TCH 46).		4 NM Holding Pattern
 <p>Diagram of the approach path showing RW34, EQAZI, and OFKEQ. The path includes a 3.03° TCH 45° angle, a 345° turn, a 346° turn, and a 166° turn. Altitudes are 2500 and 3000. Distances are 4.9 NM and 6 NM.</p>				
CATEGORY	A	B	C	D
LNAV MDA	1320-1	441 (500-1)	1320-1¼ 441 (500-1¼)	NA
CIRCLING	1380-1 495 (500-1)	1420-1 535 (600-1)	1480-1½ 595 (600-1½)	NA

NC-3, 07 AUG 2025 to 04 SEP 2025

NC-3, 07 AUG 2025 to 04 SEP 2025