

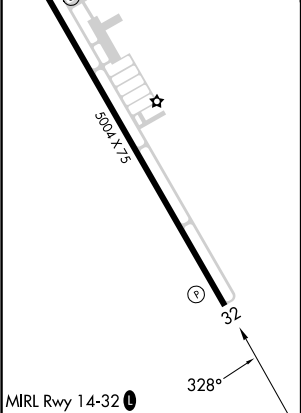
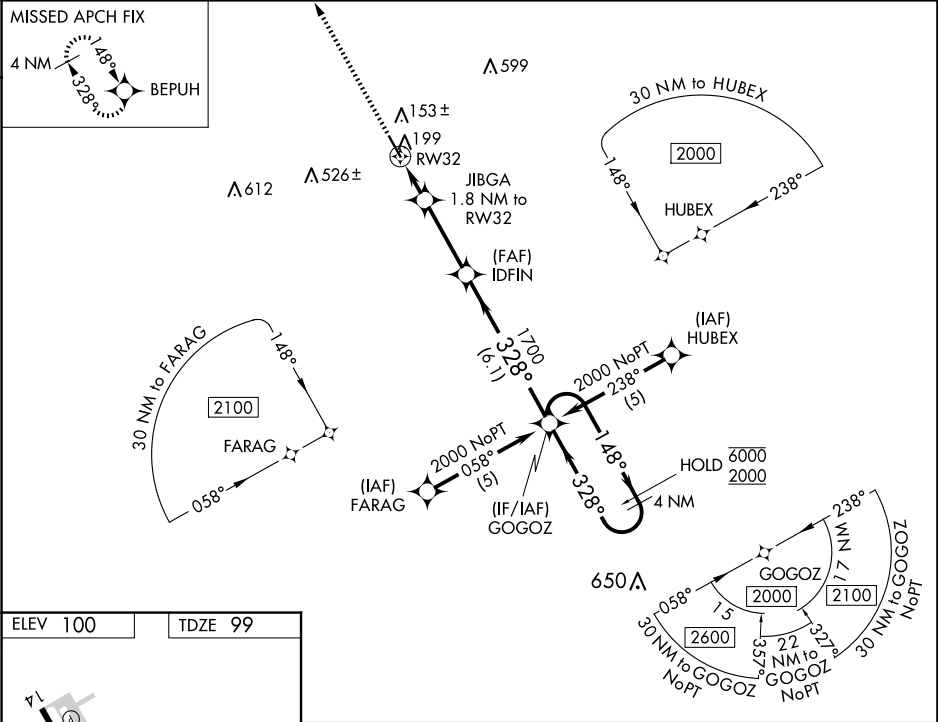
WAAS CH <b>58114</b> <b>W32A</b>	APP CRS <b>328°</b>	Rwy Idg TDZE <b>99</b> Apt Elev <b>100</b>	<b>5004</b>
--	------------------------	--	-------------

RNAV (GPS) RWY 32

WHARTON RGNL (A.R.M)

RNP APCH. ▼ For uncompensated Baro-VNAV systems, LNAV/VNAV NA below -15°C or above 54°C.	MISSED APPROACH: Climb to 2000 direct BEPUH and hold.
--	---

AWOS-3 <b>118.475</b>	HOUSTON CENTER <b>128.6 360.8</b>	UNICOM <b>122.7 (CTAF) 0</b>
--------------------------	--------------------------------------	---------------------------------



2000	BEPUH	GOGOZ 4 NM Holding Pattern			
*LNAV only	JIBGA 1.8 NM to RW32	IDFIN 1700	148° → 6000 ← 328° 2000		
*1 NM to RW32	RW32	700*	GP 3.00° TCH 42		
1 NM	0.8	3 NM	6.1 NM		
CATEGORY	A	B	C	D	
LPV DA	349-1 250 (300-1)			NA	
LNAV/VNAV DA	399-1 300 (300-1)			NA	
LNAV MDA	460-1 361 (400-1)			NA	

SC-5, 07 AUG 2025 to 04 SEP 2025

SC-5, 07 AUG 2025 to 04 SEP 2025