

APP CRS  
**239°**

Rwy Idg  
TDZE  
**1192**

Apt Elev  
**1197**

RNP APCH.


MISSED APPROACH: Climbing right turn to 3700 direct NORRI and hold.

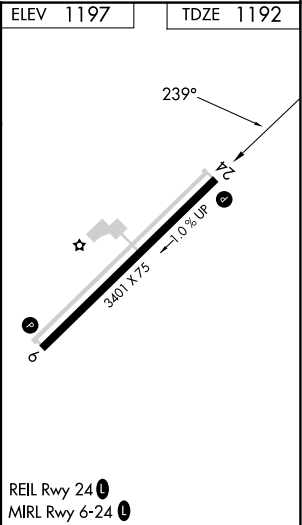
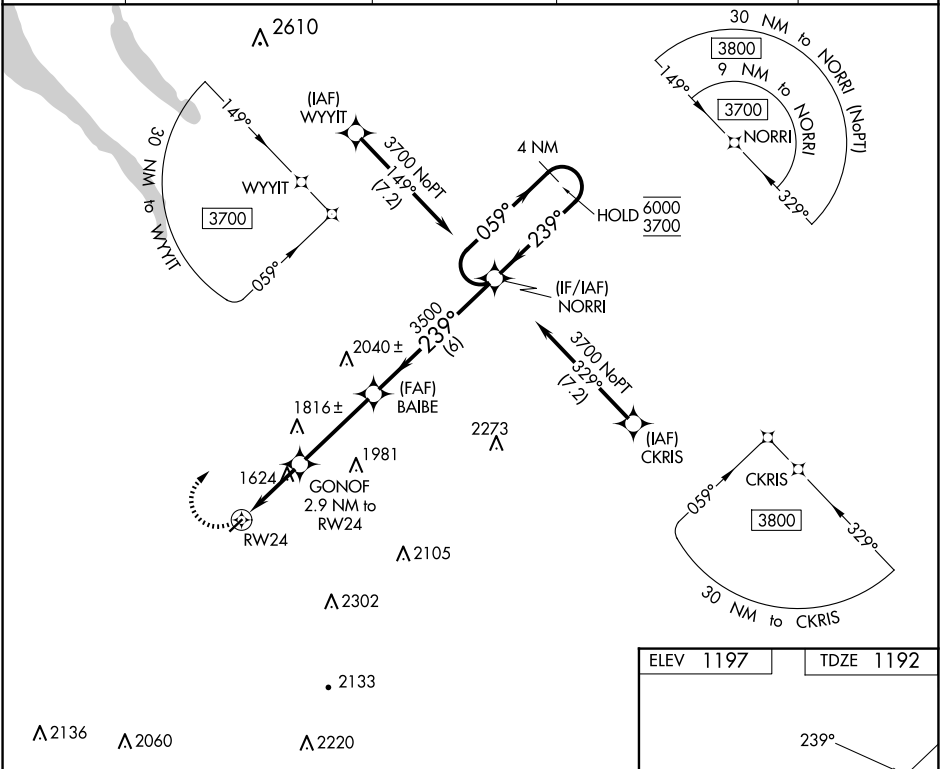
AWOS-3  
**132.225**

BINGHAMTON APP CON ★  
**118.6 257.625** (S-S-E)

ELMIRA APP CON ★  
**124.3 257.8** (W)

SYRACUSE APP CON  
**126.125 269.125** (N)

UNICOM  
**122.8** (CTAF) 



CATEGORY	VGSi and descent angles not coincident (VGSi Angle 4.00/TCH 45).			
	3700	NORRI	3500	3300
LNVA MDA	1880-1	688 (700-1)	1880-2	688 (700-2)
CIRCLING	1940-1	1980-1	2240-3	NA
	743 (800-1)	783 (800-1)	1043 (1100-3)	