

WAAS CH 77815 W11A	APP CRS 103°	Rwy Idg 5500 TDZE 107 Apt Elev 107
--	------------------------	---

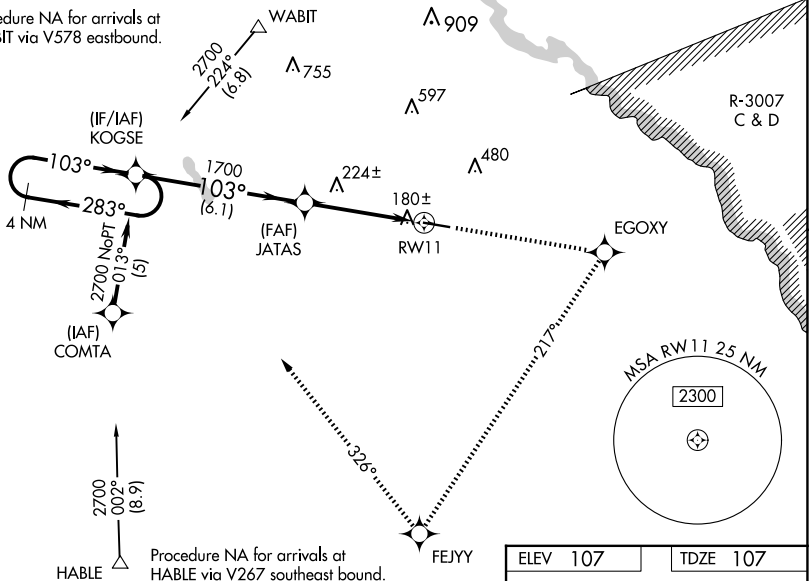
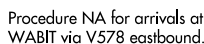
RNAV (GPS) RWY 11

JESUP-WAYNE COUNTY (JES)

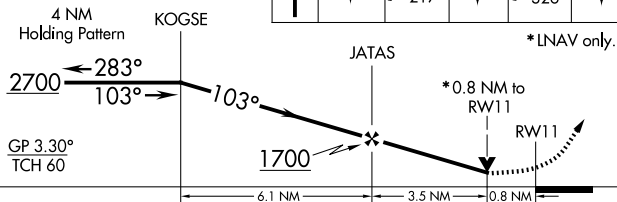
V Baro-VNAV NA when using Savannah/Hilton Head Intl altimeter setting. For
A uncompensated Baro-VNAV systems, LNAV/VNAV NA below -15°C (5°F) or above 54°C
 (130°F). DME/DME RNP-0.3 NA. Helicopter visibility reduction below 1 statute mile NA.
 When local altimeter setting not received, use Savannah/Hilton Head Intl altimeter setting:
 increase LPV DA to 583, LNAV/VNAV DA to 597, and visibility LPV all Cats ½ SM and
 LNAV/VNAV all Cats ½ SM; increase all MDAs 140 feet and visibility LNAV Cat C and
 Circling Cat C ½ SM. VDP NA when using Savannah/Hilton Head Intl altimeter setting.

MISSED APPROACH: Climb to 2700 direct EGOXY and right turn via track 217° to FEJYY and right turn via track 326° to KOGSE and hold.

AWOS-3PT 118.125	JACKSONVILLE CENTER 126.75 277.4	UNICOM 122.8 (CTAF) ①
----------------------------	--	---------------------------------



<p>VGSI and RNAV glidepath not coincident (VGSI Angle 3.75/ TCH 47).</p> <p>4 NM KOGSE</p>	<p>2700</p> 	<p>EGOXY</p> 	 <p>tr 217°</p>	<p>FEJYY</p> 	 <p>tr 326°</p>	<p>KOGSE</p> 
--	---	--	--	--	--	--



CATEGORY		A	B	C	D
LPV	DA	462-1 355 (400-1)			NA
LNAV/ VNAV	DA	476-1¼ 369 (400-1¼)			NA
LNAV	MDA	480-1 373 (400-1)			NA
CIRCLING		520-1 413 (500-1)	560-1 453 (500-1)	780-2 673 (700-2)	NA

