

WAAS CH 56619 W20A	APP CRS 201°	Rwy Idg TDZE 710 Apt Elev 718
--	------------------------	---

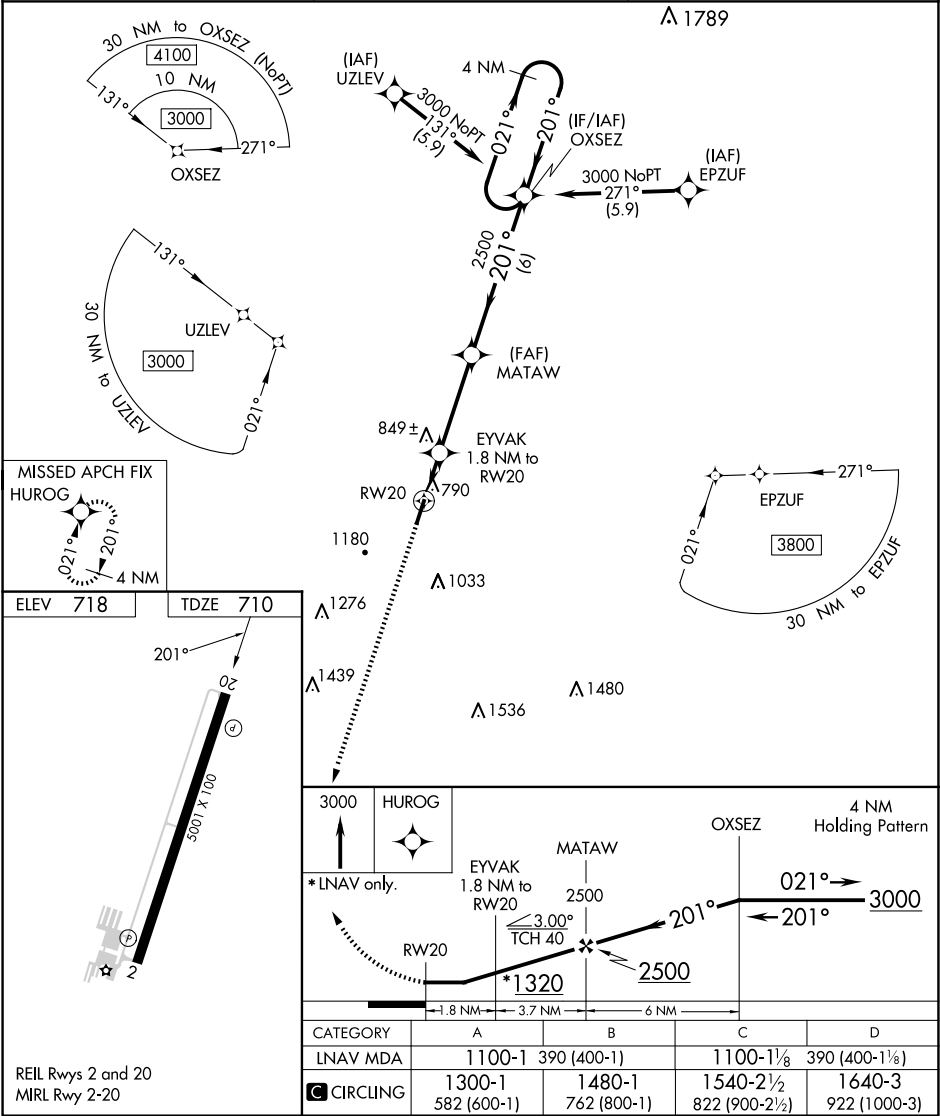
RNAV (GPS) RWY 20
ELLINGTON (LUG)

RNP APCH-GPS.

When local altimeter setting not received, use Nashville Intl altimeter setting and increase all MDA 120 feet and visibility LNAV Cats C and D and Circling Cats B and C ¼ SM. Circling to Rwy 2 NA at night. Straight-in Rwy 20 NA at night, Circling Rwy 20 NA at night. Rwy 20 helicopter visibility reduction below 1 SM NA.

MISSED APPROACH:
Climb to 3000 direct
HUROG and hold.

AWOS-3 135.775	MEMPHIS CENTER 128.15 323.125	UNICOM 122.8 (CTAF)
--------------------------	---	-------------------------------



SE-1, 07 AUG 2025 to 04 SEP 2025

SE-1, 07 AUG 2025 to 04 SEP 2025