

WAAS CH <b>93934</b> <b>W02A</b>	APP CRS <b>021°</b>	Rwy Idg <b>5001</b> TDZE <b>718</b> Apt Elev <b>718</b>
--	------------------------	---

RNAV (GPS) RWY 2  
ELLINGTON (LUG)

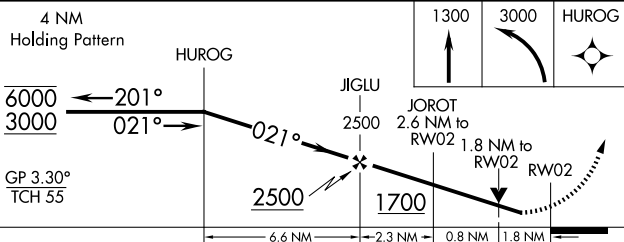
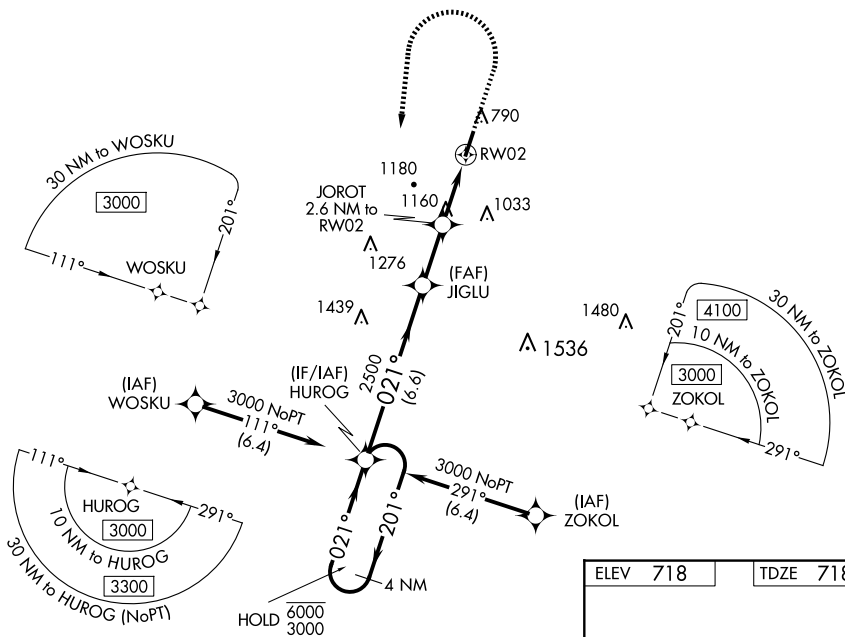
RNP APCH - GPS.


Baro-VNAV and VDP NA when using BNA alimeter setting. Circling Rwy 20 NA at night.  
Rwy 2 helicopter visibility reduction below  $\frac{1}{4}$  SM NA. When local alimeter setting not received, use BNA alimeter setting and increase LPV DA to 1096 feet and all visibilities  $\frac{1}{2}$  SM. Increase LNAV/VNAV DA to 1531 feet and all visibilities  $\frac{1}{2}$  SM. Increase all MDAs 120 feet and LNAV visibility Cat B  $\frac{1}{4}$  SM, Cats C and D  $\frac{1}{2}$  SM, Circling visibility Cats A and B  $\frac{1}{4}$  SM and Cat C  $\frac{1}{2}$  SM. For uncomputerized Baro-VNAV systems, LNAV/VNAV NA below  $-1.6^{\circ}\text{C}$  or above  $54^{\circ}\text{C}$ .

**MISSED APPROACH:**  
Climb to 1300 then  
climbing left turn to  
3000 direct HUROG  
and hold.

AWOS-3  
135.775

MEMPHIS CENTER  
128.15 323.125

UNICOM  
122.8 (CTAF)

CATEGORY		A	B	C	D
LPV	DA	993-7/8	275 (300-7/8)		NA
LNAV/ VNAV	DA	1428-2	710 (800-2)		NA
LNAV	MDA	1420-1	702 (800-1)	1420-2	702 (800-2)
 CIRCLING		1420-1 702 (800-1)	1480-1 762 (800-1)	1540-2 1/2 822 (900-2 1/2)	1640-3 922 (1000-3)

