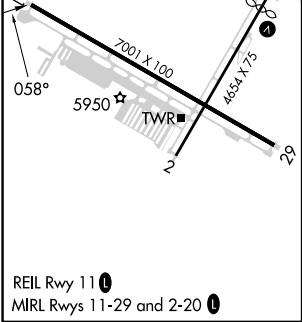
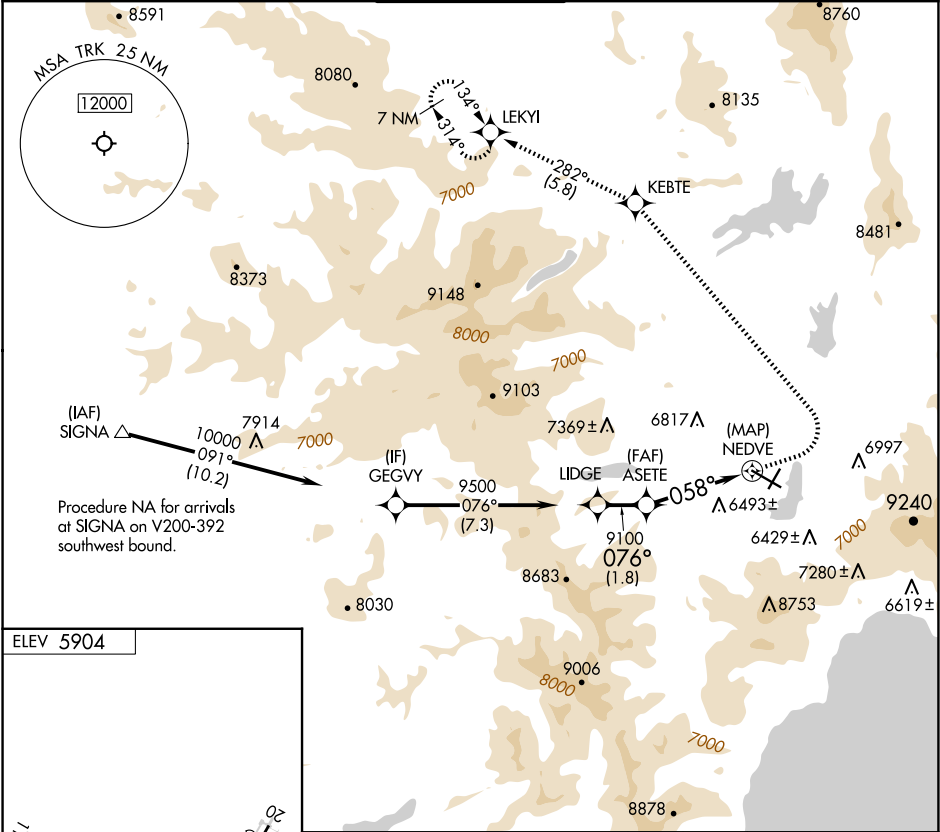


APP CRS	Rwy Ldg	N/A
058°	TDZE	N/A
	Apt Elev	5904

RNAV (GPS)-A  
TRUCKEE-TAHOE (TRK)

RNP APCH.	MISSED APPROACH: (Do not exceed 200K until KEBTE) Climb to 7800 then climbing left turn to 12000 direct KEBTE and track 282° to LEKYI and hold, continue climb-in-hold 12000.
Circling NA for Cat C south of Rwy 29 and east of Rwy 2. Procedure NA at night. When local altimeter setting not received, procedure NA. -17°C	

D-ATIS 118.0	OAKLAND CENTER 127.95 316.1	TRUCKEE TOWER ★ 120.575 (CTAF) 0	GND CON 118.3	UNICOM 122.95
-----------------	--------------------------------	-------------------------------------	------------------	------------------



	LIDGE	ASETTE	NEDVE	
	9500	9100		
	076°	058°		
	1.8 NM	4 NM		
CATEGORY	A	B	C	D
CIRCLING	7500-1¼ 1596 (1600-1¼)	7500-1½ 1596 (1600-1½)	7700-3 1796 (1800-3)	NA

SW-2, 07 AUG 2025 to 04 SEP 2025

SW-2, 07 AUG 2025 to 04 SEP 2025