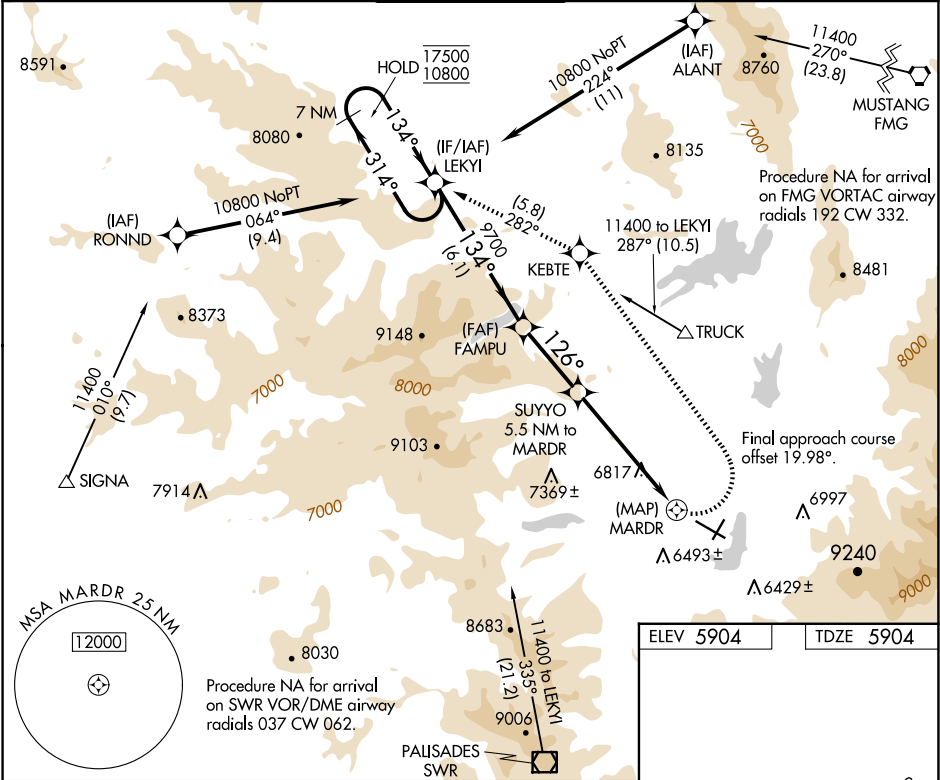



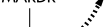



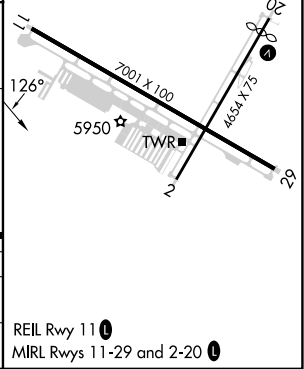
APP CRS	Rwy Ldg	7001
126°	TDZE	5904
	Apt Elev	5904

RNAV (GPS) RWY 11
TRUCKEE-TAHOE (TRK)

RNP APCH.		MISSED APPROACH: (Do not exceed 220K until KEBTE) Climbing left turn to 12000 direct KEBTE and track 282° to LEKY1 and hold, continue climb-in-hold 12000.		
▼ Circling NA for Cat C south of Rwy 29 and east of Rwy 2. ▲ Procedure NA at night. Rwy 11 helicopter visibility reduction below 1 SM NA. When local altimeter setting not received, procedure NA.				
D-ATIS	OAKLAND CENTER	TRUCKEE TOWER ★	GND CON	UNICOM
118.0	127.95 316.1	120.575 (CTAF) 0	118.3	122.95



<div>7 NM Holding Pattern</div>				<div>LEKYI</div>		<div>FAMPU</div>		<div>12000</div> <div></div>		<div>KEBTE</div> <div></div>		<div>tr 282°</div>		<div>LEKYI</div> <div></div>	
<div>17500 ← 314°</div>		<div>10800 → 134°</div>		<div>134°</div>		<div>3.77° TCH 40</div>		<div>SUIYYO 5.5 NM to MARDR</div>							
				<div>9700</div>		<div>126°</div>		<div>8480</div>		<div>MARDR</div> <div></div>					
				<div>6.1 NM</div>		<div>3.1 NM</div>		<div>5.5 NM</div>		<div>0.8</div> <div></div>					
CATEGORY		A		B		C		D							
LNAV MDA		7720-1¼ 1816 (1900-1¼)		7720-1½ 1816 (1900-1½)		7720-3 1816 (1900-3)		NA							
<div>C</div> CIRCLING		7720-1¼ 1816 (1900-1¼)		7720-1½ 1816 (1900-1½)		7720-3 1816 (1900-3)		NA							



SW-2, 07 AUG 2025 to 04 SEP 2025

SW-2, 07 AUG 2025 to 04 SEP 2025