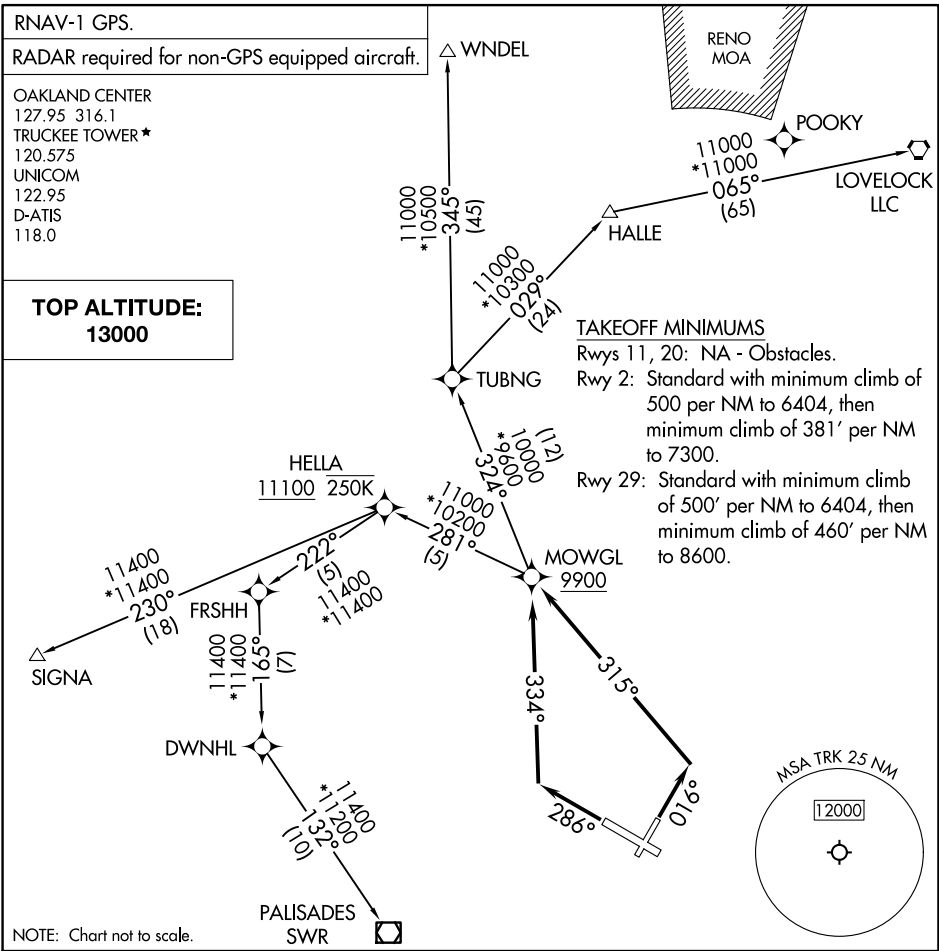


MOWGL TWO DEPARTURE (RNAV)

AL-6021 (FAA)

TRUCKEE-TAHOE (TRK)
TRUCKEE, CALIFORNIA



DEPARTURE ROUTE DESCRIPTION
TAKEOFF RUNWAY 2: Climb on heading 016° to intercept course 315° to cross MOWGL at or above 9900, thence. . .
TAKEOFF RUNWAY 29: Climb on heading 286° to intercept course 334° to cross MOWGL at or above 9900, thence. . .
. . . (transition) maintain 13000 expect filed altitude 10 minutes after departure.
HALLE TRANSITION (MOWGL2.HALLE)
LOVELOCK TRANSITION (MOWGL2.LLC)
PALISADES TRANSITION (MOWGL2.SWR)
SIGNA TRANSITION (MOWGL2.SIGNA)
WNDEL TRANSITION (MOWGL2.WNDEL)