

NAPLES, FLORIDA

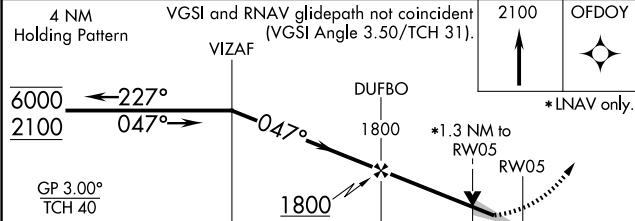
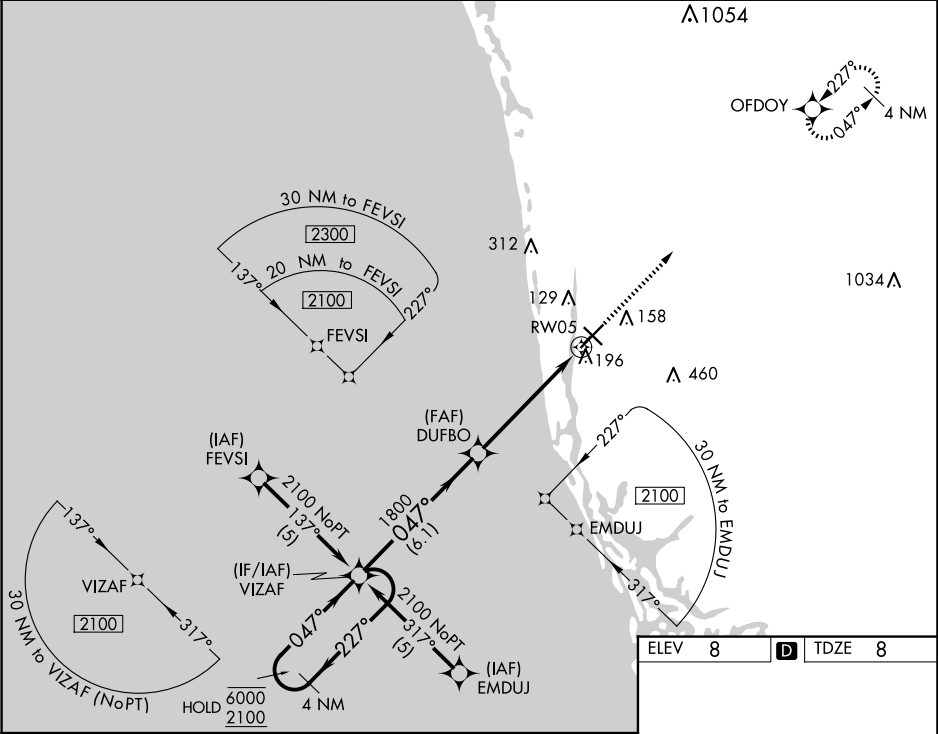
AL-6020 (FAA)

25107

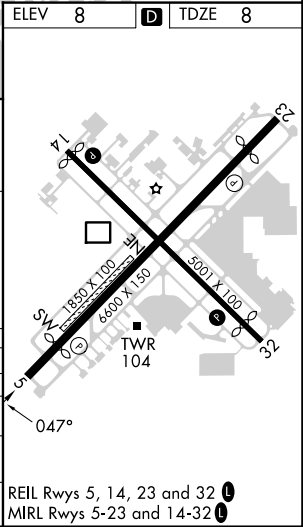
WAAS CH 73015 W05A	APP CRS 047°	Rwy ldg TDZE Apt Elev 5000 8 8
--	------------------------	--

RNAV (GPS) RWY 5
NAPLES MUNI (APF')

RNP APCH. For uncompensated Baro-VNAV systems, LNAV/VNAV NA below 5°C or above 54°C.		MISSED APPROACH: Climb to 2100 direct OFDOY and hold.			
ATIS 134.225	FORT MYERS APP CON★ 124.125 371.85	NAPLES TOWER★ 128.5 (CTAF) 0	GND CON 121.6	CLNC DEL 118.0	CLNC DEL 124.125 (When twr closed)



CATEGORY	A	B	C	D
LPV DA		295- $\frac{7}{8}$	287 (300- $\frac{7}{8}$)	
LNAV/VNAV DA		446- $1\frac{1}{4}$	438 (500- $1\frac{1}{4}$)	
LNAV MDA	540-1	532 (600-1)	540- $1\frac{1}{2}$	532 (600- $1\frac{1}{2}$)
CIRCLING	580-1	572 (600-1)	680-2 672 (700-2)	820- $2\frac{3}{4}$ 812 (900- $2\frac{3}{4}$)



NAPLES, FLORIDA
Amdt 2C 17JUN21

26°09'N-81°47'W

NAPLES MUNI (APF')
RNAV (GPS) RWY 5

SE-3, 07 AUG 2025 to 04 SEP 2025

SE-3, 07 AUG 2025 to 04 SEP 2025