

WAAS  
CH **69314**  
**W23A**

APP CRS  
**227°**

Rwy ldg  
TDZE  
Apt Elev  
**5000**  
**8**  
**8**

**RNAV (GPS) RWY 23**  
NAPLES MUNI (APF')

RNP APCH.

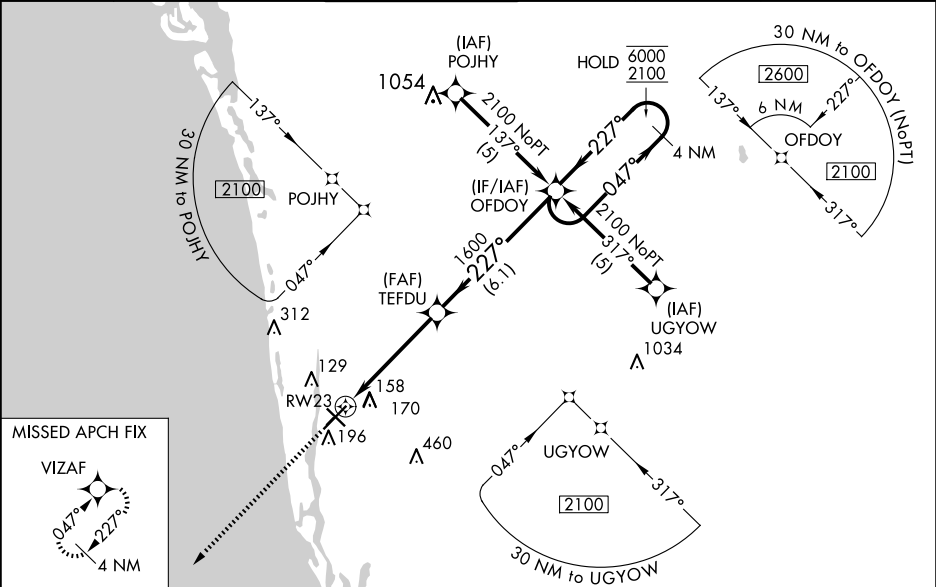
▼

▲

Rwy 23 helicopter visibility reduction below ¾ SM NA.  
For uncompensated Baro-VNAV systems, LNAV/VNAV  
NA below 5°C or above 54°C.

MISSED APPROACH: Climb to 2100 direct VIZAF and hold.

ATIS <b>134.225</b>	FORT MYERS APP CON★ <b>124.125 371.85</b>	NAPLES TOWER★ <b>128.5 (CTAF) 0</b>	GND CON <b>121.6</b>	CLNC DEL <b>118.0</b>	CLNC DEL <b>124.125</b> (When twr closed)
------------------------	--	--	-------------------------	--------------------------	---



ELEV 8 TDZE 8

2100

VIZAF

TEFDU

OFDOY

\*LNAV only.

\*1.2 NM to RW23

\*1.2 NM

\*3.6 NM

\*6.1 NM

4 NM Holding Pattern

GP 3.00° TCH 44

CATEGORY	A	B	C	D
LPV DA	313-7⁄8		305 (400-7⁄8)	
LNAV/VNAV DA	461-13⁄8		453 (500-13⁄8)	
LNAV MDA	440-1	432 (500-1)	440-1¼	432 (500-1¼)
CIRCLING	580-1	572 (600-1)	680-2 672 (700-2)	820-2¾ 812 (900-2¾)