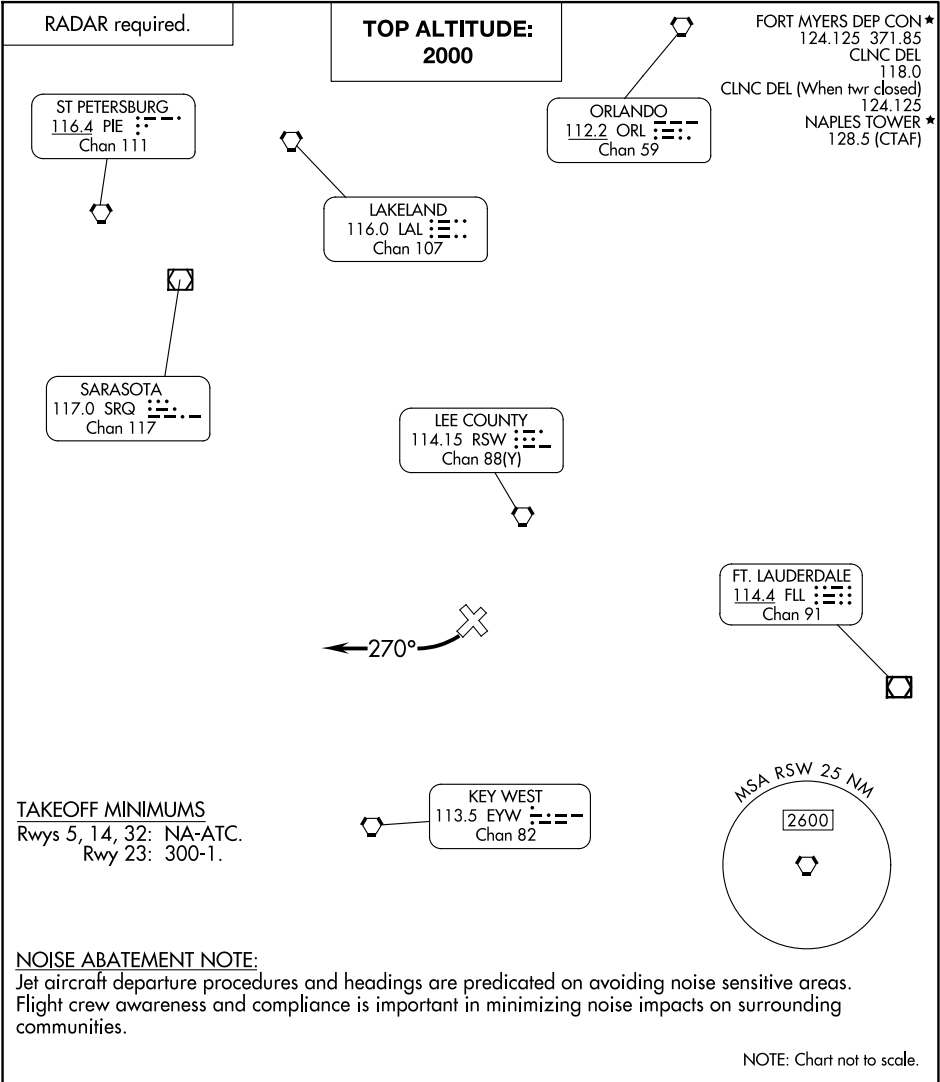



NAPLES SIX DEPARTURE





DEPARTURE ROUTE DESCRIPTION

TAKEOFF RUNWAY 23: Turn right heading 270°. Climb and maintain 2000. Expect RADAR vectors to join assigned route. Expect clearance to filed altitude 10 minutes after departure.

SE-3, 07 AUG 2025 to 04 SEP 2025

SE-3, 07 AUG 2025 to 04 SEP 2025