

APP CRS	Rwy Idg	3641
323°	TDZE	1286
	Apt Elev	1288

RNAV (GPS) RWY 32

AUDUBON COUNTY (ADU)

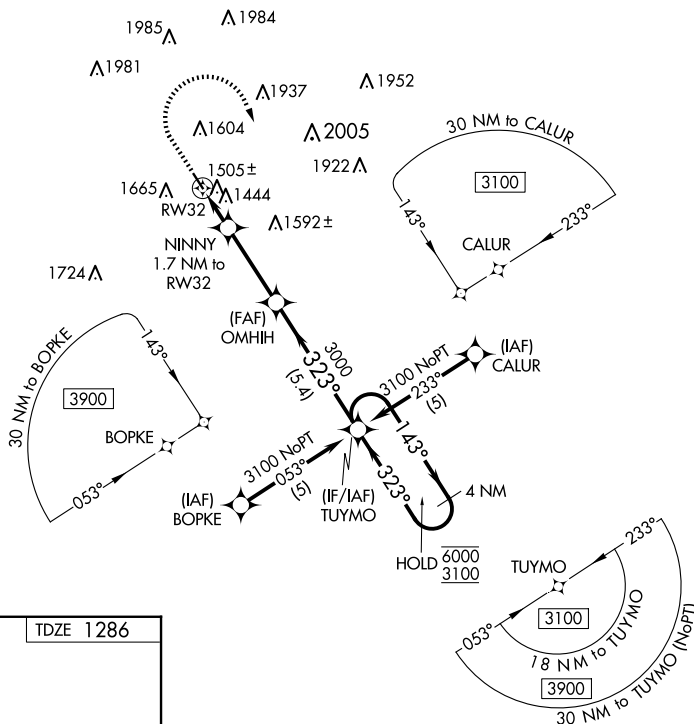
RNP APCH - GPS.

T When local altimeter setting not received, procedure NA.
Rwy 32 helicopter visibility reduction below $\frac{3}{4}$ SM NA.
Circling Rwy 14 NA at night.

MISSED APPROACH: Climb to 2500 then climbing right turn to 3100 direct TUYMO and hold.

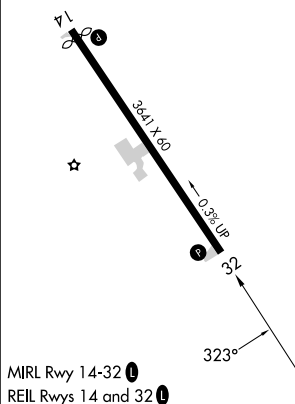
AWOS-3
118.075

MINNEAPOLIS CENTER
119.6 290.4

UNICOM
122.8 (CTAF) **L**

ELEV 1288

TDZE 1286



AUDUBON, IOWA
Amdt 1 21MAR24

AUDUBON COUNTY (ADU)

RNAV (GPS) RWY 32

41°42'N-94°55'W

NC-3, 07 AUG 2025 to 04 SEP 2025

[illegible]