

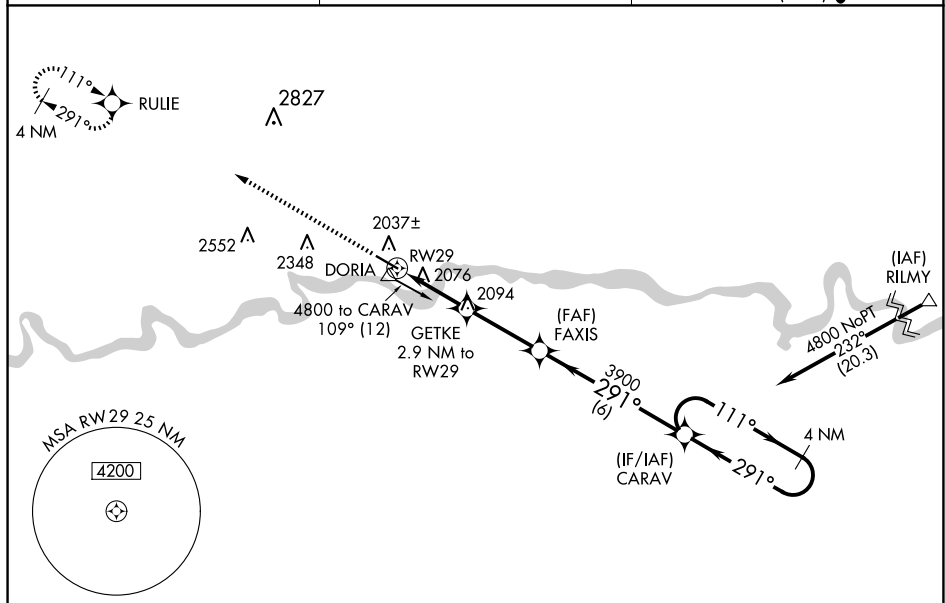
WAAS CH <b>49229</b> <b>W29A</b>	APP CRS <b>291°</b>	Rwy Idg TDZE Apt Elev	<b>5091</b> <b>1989</b> <b>1989</b>
--	------------------------	-----------------------------	---

RNAV (GPS) RWY 29  
L M CLAYTON (OLF)

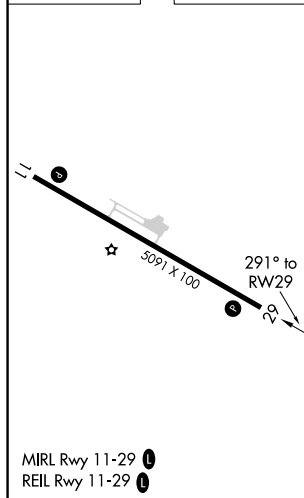
**A** For uncompensated Baro-VNAV systems, LNAV/VNAV NA below -18°C (0°F) or above 54°C (130°F). DME/DME RNP-0.3 NA. When local altimeter setting not received, use Wokaf FLD/Glasgow-Volley County altimeter setting: increase LPV DA to 2330 ft and visibility  $\frac{3}{4}$  SM, LNAV/VNAV DA to 2380 ft and visibility  $\frac{1}{2}$  SM; increase all MDA 160 feet and LNAV and Circling visibility Cat C/D  $\frac{1}{2}$  SM. Baro-VNAV and VDP NA with Glasgow altimeter setting.

**MISSED APPROACH:**  
Climb to 4500 direct  
RULIE and hold.

ASOS 118,325	SALT LAKE CENTER 126.85 305.2	UNICOM 122.8 (CTAF) 0
-----------------	----------------------------------	--------------------------



ELEV 1989		TDZE 1989
-----------	--	-----------



CATEGORY	A	B	C	D
LPV DA	2189- $\frac{3}{4}$ 200 (200- $\frac{3}{4}$ )			
RNAV/ VNAV DA	2239- $\frac{7}{8}$ 250 (300- $\frac{7}{8}$ )			
RNAV MDA	2340-1 351 (400-1)			
CIRCLING	2480-1 491 (500-1)	2660-2 671 (700-2)	2780-2 $\frac{1}{2}$ 791 (800-2 $\frac{1}{2}$ )	