

WAAS CH 77929 W11A	APP CRS 111°	Rwy Idg TDZE 1988 Apt Elev 1989	5091
--	------------------------	---	-------------

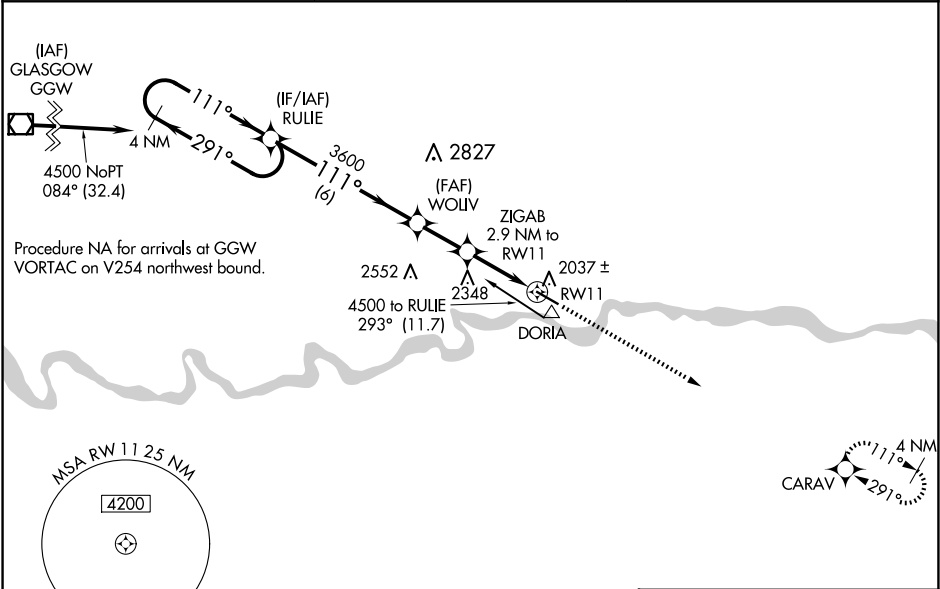
RNAV (GPS) RWY 11

L M CLAYTON (OLF')

⚠ For uncompensated Baro-VNAV systems, LNAV/VNAV NA below -18°C (0°F) or above 54°C (130°F). DME/DME RNP-0.3 NA. When local altimeter setting not received, use Wokla FLD/Glasgow-Valley County altimeter setting: increase LPV DA to 2329 ft and visibility ¾ SM, LNAV/VNAV DA to 2407 ft and visibility ½ SM; increase all MDA 160 feet and LNAV and Circling visibility Cat C/D ½ SM. Baro-VNAV and VDP NA with Glasgow altimeter setting.

MISSED APPROACH:
Climb to 4800 direct
CARAV and hold.

ASOS 118.325	SALT LAKE CENTER 126.85 305.2	UNICOM 122.8 (CTAF) 1
------------------------	---	---------------------------------



ELEV 1989		TDZE 1988	
4 NM Holding Pattern		VGSI and RNAV glidepath not coincident (VGSI Angle 3.00/TCH 28).	
RULIE		WOLIV	
4500 ← 291°		3600	
GP 3.00°		3600	
TCH 40		*2940	
6 NM		2 NM	
1.4 NM		1.5 NM	
CATEGORY		A	
LPV DA		2188-¾ 200 (200-¾)	
LNAV/VNAV DA		2266-7/8 278 (300-7/8)	
LNAV MDA		2500-1 512 (600-1)	
CIRCLING		2500-1 511 (600-1)	
MIRL Rwy 11-29 1		REIL Rwy 11-29 1	