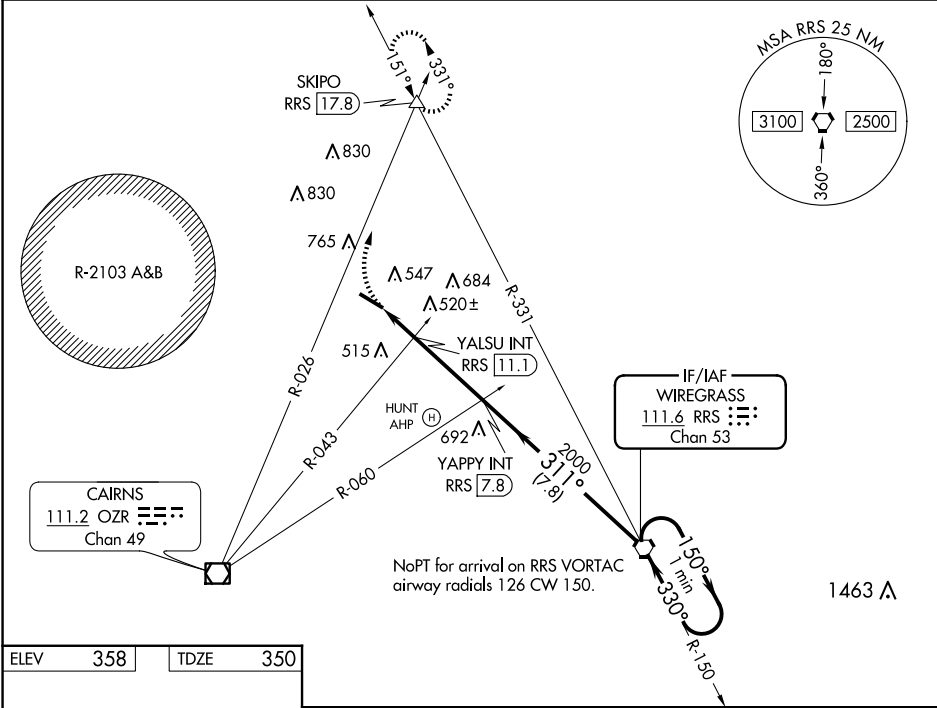


VORTAC RRS	APP CRS	Rwy Idg	5152
111.6	311°	TDZE	350
Chan 53		Apt Elev	358

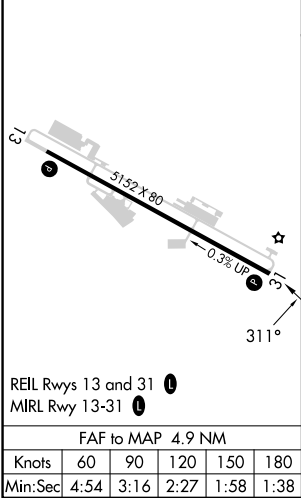
VOR RWY 31
OZARK/BLACKWELL FLD (71J)

▼ NA	Use Dathan altimeter setting; when not received, use Cairns AAF (Fort Novosel) altimeter setting. Procedure NA at night. Rwy 31 helicopter visibility reduction below 1 SM NA.	MISSED APPROACH: Climbing right turn to 2000 on OZR VOR/DME R-026 to SKIPO INT/RRS 17.8 DME and hold.
---------	--	---

DHN ASOS 135.725	CAIRNS APP CON ★ 125.4 327.125	UNICOM 122.7 (CTAF) 0
---------------------	-----------------------------------	--------------------------



ELEV	358	TDZE	350
------	-----	------	-----



2000	SKIPO				
OZR R-026					
	YALSU INT RRS 11.1	YAPPY INT RRS 7.8	RRS VORTAC		One Minute Holding Pattern
	880	2000	2100		
	1.6 NM	3.3 NM	7.8 NM		
CATEGORY	A	B	C	D	
S-31	880-1	530 (600-1)	880-1½ 530 (600-1½)	NA	
CIRCLING	900-1 542 (600-1)	1100-1¾ 742 (800-1¾)	1100-2¼ 742 (800-2¼)	NA	
YALSU FIX MINIMUMS (DUAL VOR RECEIVERS OR DME REQUIRED)					
S-31	820-1	470 (500-1)	820-1¾ 470 (500-1¾)	NA	
CIRCLING	900-1 542 (600-1)	1100-1¾ 742 (800-1¾)	1100-2¼ 742 (800-2¼)	NA	