

WAAS CH 60907 W35A	APP CRS 348°	Rwy ldg 5503 TDZE 1140 Apt Elev 1165
--	------------------------	---

RNAV (GPS) RWY 35

WEST GEORGIA RGNL/O V GRAY FLD (CTJ)

RNP APCH-GPS.

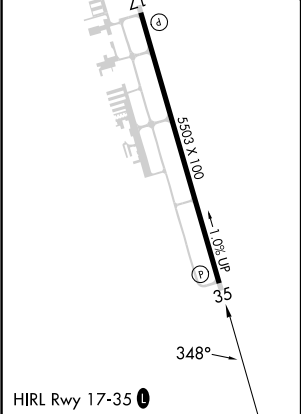
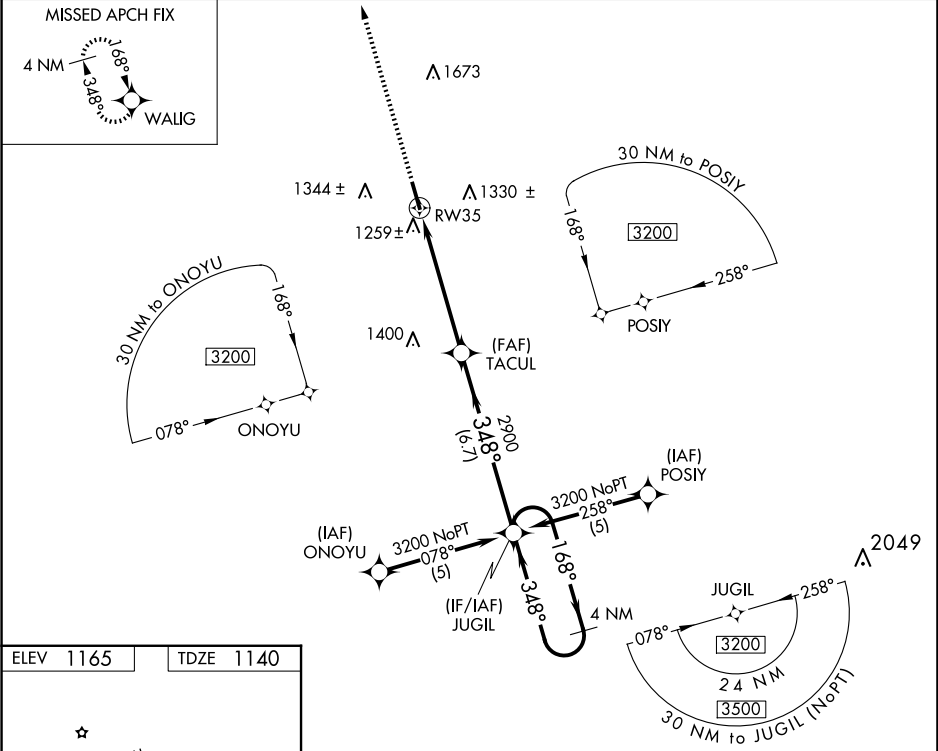
▼

▲

When local altimeter setting not received, use Newnan Coweta County altimeter setting and increase DA to 1480 feet and all visibilities ¼ SM; increase all MDAs 100 feet and visibility Cat C ½ SM and Cat D ¼ SM. VDP NA when using Newnan Coweta County altimeter setting.

MISSED APPROACH:
Climb to 3200 direct
WALIG and hold.

AWOS-3 118.175	ATLANTA APP CON 121.0 268.7	CLNC DEL 121.6	UNICOM 122.975 (CTAF) 0
--------------------------	---------------------------------------	--------------------------	-----------------------------------



3200

↑

WALIG

✧

VGSI and RNAV glidepath not coincident
(VGSI Angle 3.00/TCH 54).

4 NM

Holding Pattern

*LNAV only.

TACUL

JUGIL

168° →

← 348°

3200

GP 3.00°
TCH 47

*1.4 NM to RW35

RW35

1.4

4 NM

6.7 NM

348°

2900

CATEGORY	A				B		C		D	
LPV DA	1390-1 250 (300-1)									
LNAV/ VNAV DA	NA									
LNAV MDA	1580-1 440 (500-1)				1580-1½ 440 (500-1½)			1580-1½ 440 (500-1½)		
CIRCLING	1660-1 495 (500-1)		1700-1 535 (600-1)		1880-2 715 (800-2)			2000-2¾ 835 (900-2¾)		