

LOC I-CTJ
111.7

APP CRS
348°

Rwy Idg
TDZE **1140**
Apt Elev **1165**

ILS or LOC RWY 35

WEST GEORGIA RGNL/O V GRAY FLD (CTJ)

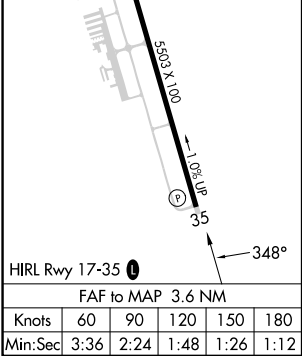
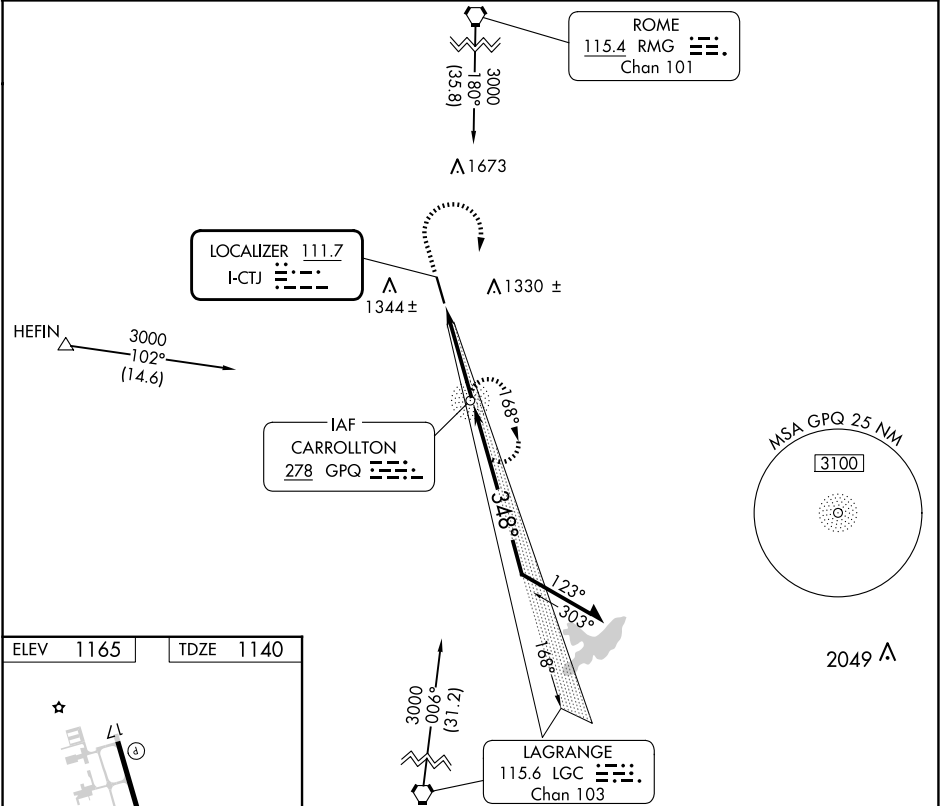
ADF required.

▼
NA

When local altimeter setting not received, use Newnan Coweta County altimeter setting and increase DA to 1430 feet and all visibilities $\frac{1}{4}$ SM; increase all MDAs 100 feet and visibility Cat C and D visibility $\frac{1}{2}$ SM.

MISSED APPROACH: Climb to 1800 then climbing right turn to 3000 direct GPQ NDB and hold.

AWOS-3 118.175	ATLANTA APP CON 121.0 268.7	CLNC DEL 121.6	UNICOM 122.975 (CTAF) 0
--------------------------	---------------------------------------	--------------------------	-----------------------------------



1800

↑

3000

↗

GPQ

GPQ

NDB

2328

↗ 168°

↖ 348°

2900

2400

VGSI and ILS glidepath not coincident
(VGSI Angle 3.00/TCH 54).

Remain within 10 NM

GS 3.00°

TCH 47

3.6 NM

CATEGORY	A	B	C	D
S-ILS 35	1340-¾ 200 (200-¾)			
S-LOC 35	1480-1 340 (400-1)			
CIRCLING	1660-1	1700-1	1880-2	2000-2¾
	495 (500-1)	535 (600-1)	715 (800-2)	835 (900-2¾)