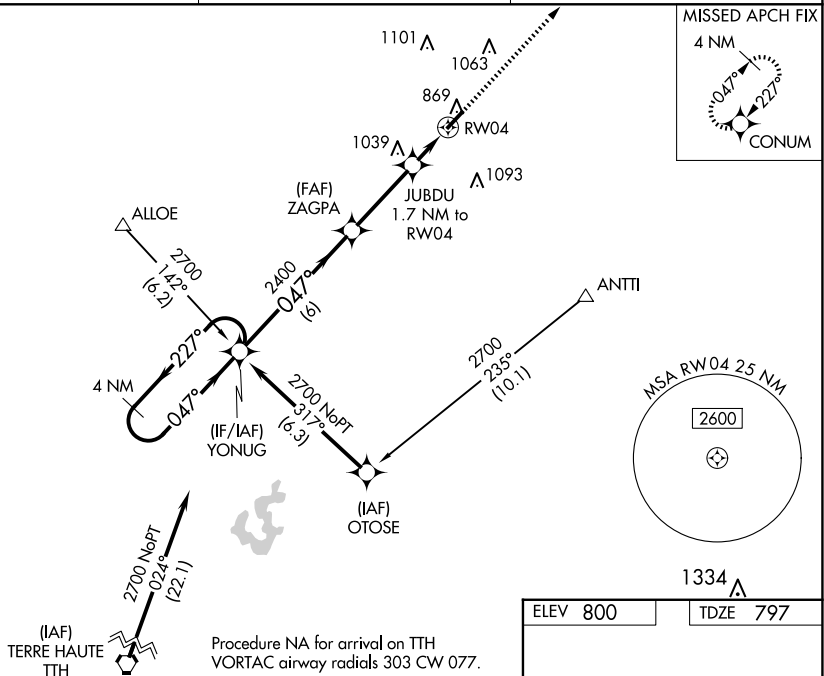


RNAV (GPS) RWY 4  
CRAWFORDSVILLE RGNL (CFJ)

Baro-VNAV NA when using Greencastle altimeter setting. For uncompensated Baro-VNAV systems, LNAV/VNAV NA below -16°C or above 54°C. When local altimeter setting not received, use Greencastle altimeter setting: increase LPV DA to 1128 feet and all visibilities ¼ SM, LNAV/VNAV DA to 1118 feet and all visibilities ¼ SM; increase all MDA 60 feet and Circling Cats C and D visibilities ¼ SM. Rwy 4 helicopter visibility reduction below ¾ SM NA.

**MISSED APPROACH:**  
Climb to 2700 direct  
CONUM and hold.

UNICOM  
122.8 (CTAF) **L**

4 NM Holding Pattern

VGS and RNAV glidepath not coincident (VGS Angle 3.00/TCH 41).

2700 CONUM

YONUG

ZAGPA

JUBDU 1.7 NM to RW04

2700

227°

047°

047°

2400

2400

1380


GP 3.00°

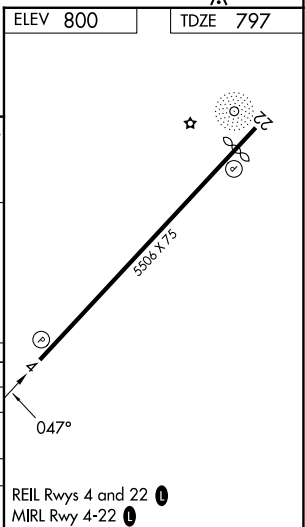
TCH 50

RW04

\*1380

\*RNAV only.

CATEGORY	A	B	C	D
LPV DA		1076- $\frac{7}{8}$	279 (300-%)	
LNAV/VNAV DA		1066- $\frac{7}{8}$	269 (300-%)	
LNAV MDA	1240-1	443 (500-1)	1240-1 $\frac{3}{8}$	443 (500-1 $\frac{3}{8}$ )
 CIRCLING	1240-1 440 (500-1)	1260-1 460 (500-1)	1440-1 $\frac{3}{4}$ 640 (700-1 $\frac{3}{4}$ )	1520-2 $\frac{1}{4}$ 720 (800-2 $\frac{1}{4}$ )



EC-2, 07 AUG 2025 to 04 SEP 2025