

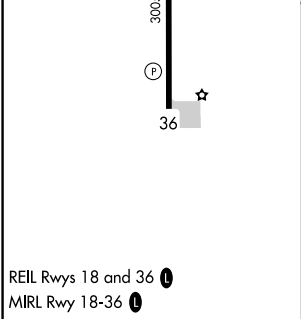
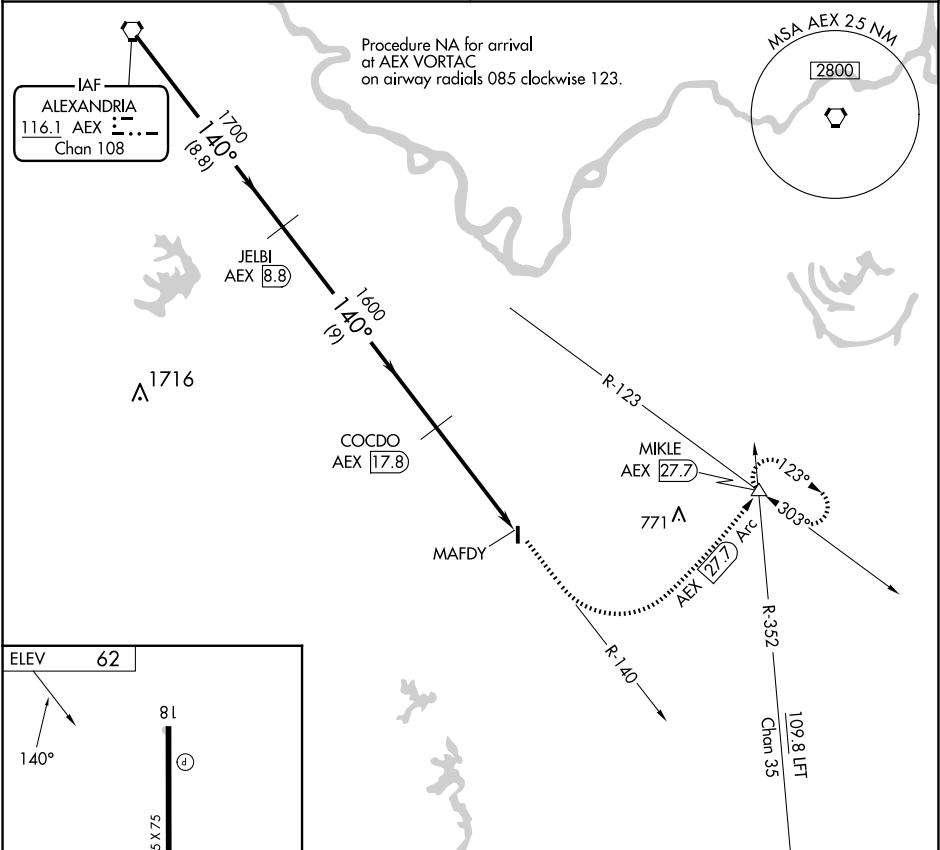
VORTAC AEX 116.1 Chan 108	APP CRS 140°	Rwy Idg TDZE Apt Elev 62	N/A N/A 62
--	-------------------------------	---	---------------------------------------

VOR/DME-A

BUNKIE MUNI (2R6)

<div><div><div></div><div>NA</div></div></div> <div>Use Alexandria Intl altimeter setting; when not received, use Esler Rgnl altimeter setting.</div>	MISSED APPROACH: Climb to 3000 via AEX R-140 and AEX 27.7 DME Arc to MIKLE Int/AEX 27.7 DME and hold.
---	---

POLK APP CON 125.4 302.2	CTAF 122.9 0
---	-------------------------------



	AEX VORTAC 2000	JELBI AEX 8.8	COCDO AEX 17.8	MAFDY AEX 22.4	MIKLE 3000 AEX R-140 AEX 27.7 Arc △
	Procedure Turn NA	1700	1600		
	8.8 NM	9 NM	4.6 NM		
CATEGORY	A	B	C	D	
CIRCLING	880-1 818 (900-1)	880-1¼ 818 (900-1¼)	NA		

SC-4, 07 AUG 2025 to 04 SEP 2025

SC-4, 07 AUG 2025 to 04 SEP 2025