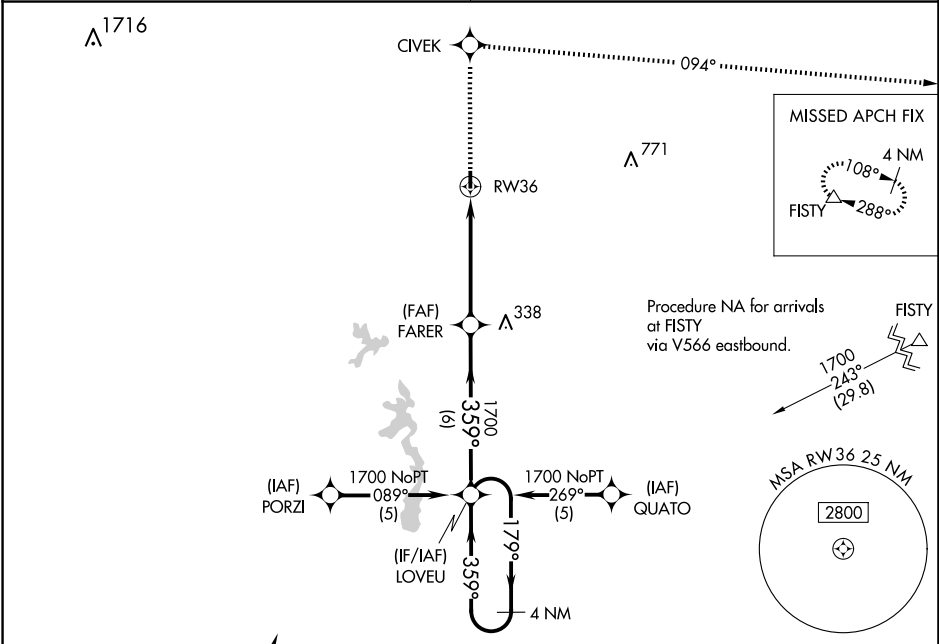


APP CRS	Rwy Idg	3005
359°	TDZE	60
	Apt Elev	62

RNAV (GPS) RWY 36  
BUNKIE MUNI (2R6)

<p><b>NA</b> DME/DME RNP-0.3 NA. Visibility reduction by helicopters NA. Use Alexandria Intl altimeter setting; when not received, use Esler Rgnl altimeter setting.</p>	<p>MISSED APPROACH: Climb to 4000 direct CIVEK and right turn via 094° track to FISTY and hold.</p>
--	---

<p>POLK APP CON 125.4 302.2</p>	<p>CTAF 122.9</p>
-------------------------------------	-----------------------



ELEV 62	TDZE 60
---------	---------

REIL Rwy 18 and 36  
MIRL Rwy 18-36

