
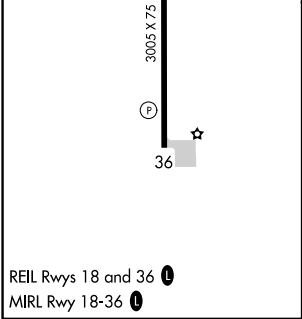
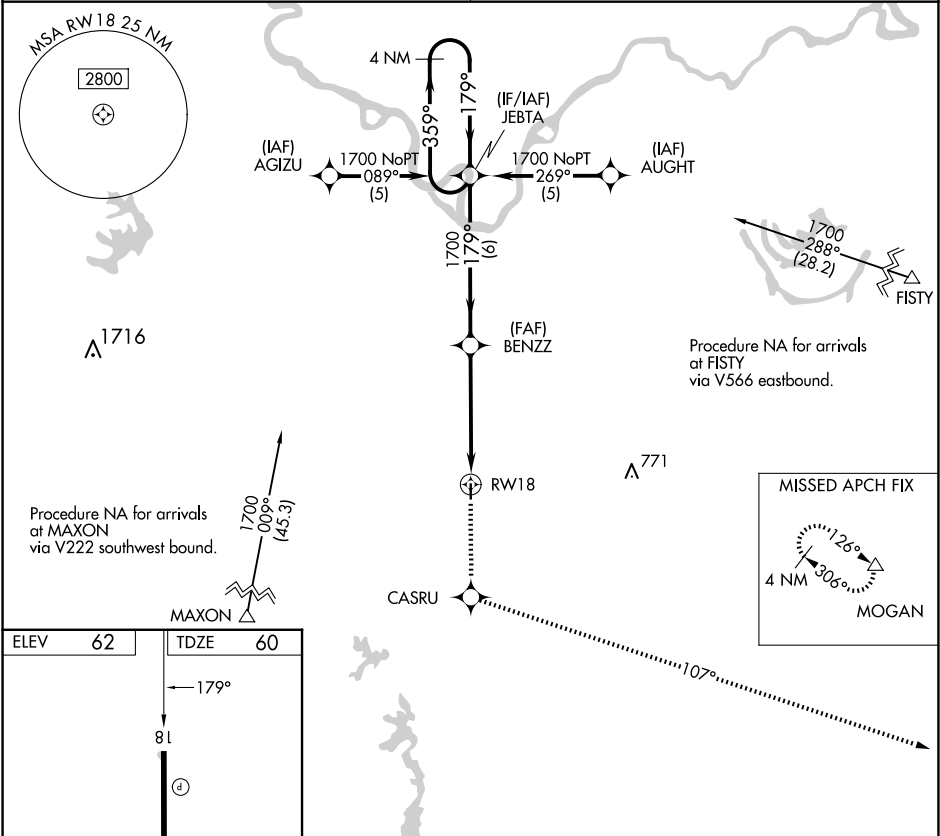


APP CRS	Rwy Idg	3005
179°	TDZE	60
	Apt Elev	62

RNAV (GPS) RWY 18

BUNKIE MUNI (2R6)

RNP APCH.	MISSED APPROACH: Climb to 2000 direct CASRU and via 107° track to MOGAN and hold.
<div><div>▼</div><div>▲NA</div></div> Use Alexandria Intl altimeter setting; when not received, use Esler Rgnl altimeter setting.	
POLK APP CON 125.4 302.2	CTAF 122.9 



2000	CASRU	107° tr	MOGAN	VGSI and descent angles not coincident (VGSI Angle 3.00/TCH 25).
<div><div><div>RW18</div><div>BENZZ</div><div>JEBTA</div><div>4 NM Holding Pattern</div></div><div><div>1700</div><div>179°</div><div>359°</div><div>1700</div></div><div><div>5 NM</div><div>6 NM</div></div></div>				
CATEGORY	A	B	C	D
LNAV MDA	600-1	540 (600-1)	NA	