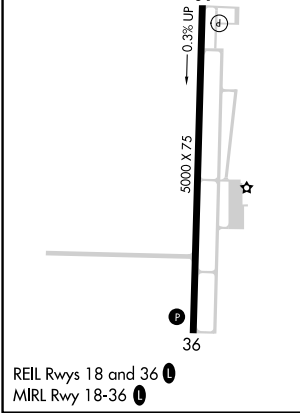
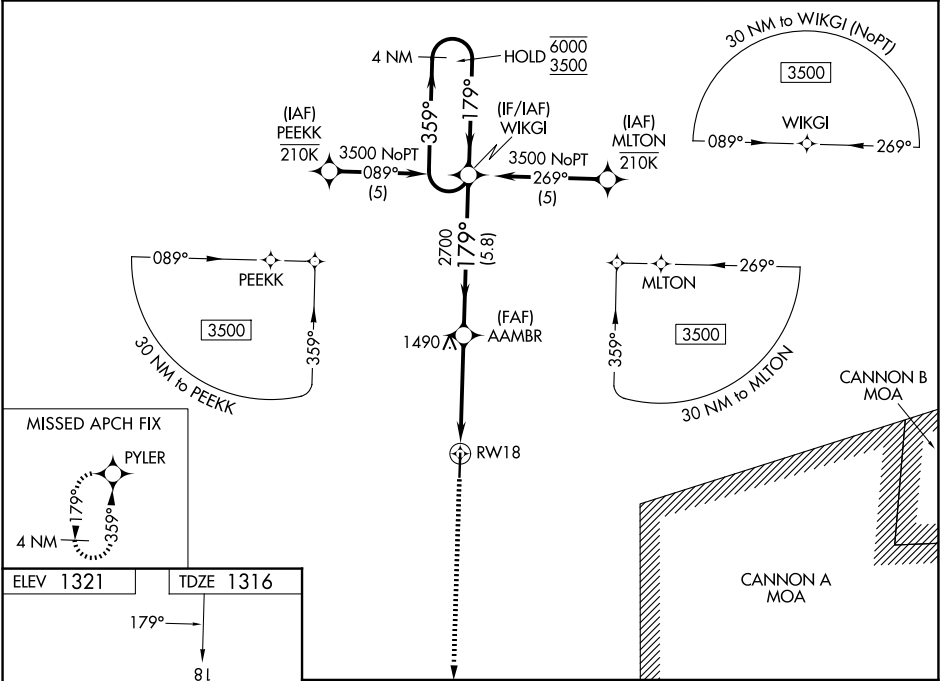




APP CRS	Rwy Ldg	5000
179°	TDZE	1316
	Apt Elev	1321

RNAV (GPS) RWY 18
FLOYD W JONES LEBANON (LBO)

RNP APCH - GPS.	
<p>Baro-VNAV and VDP NA when using OZS altimeter setting. For uncompensated Baro-VNAV systems, LNAV/VNAV NA below -17°C or above 54°C. Rwy 18 helicopter visibility reduction below ¾ SM NA. When local altimeter setting not received, use OZS altimeter setting: increase LNAV/VNAV DA to 1717 feet and all visibilities ½ SM; increase all MDAs 100 feet and LNAV visibility Cats C and D ¼ SM, and Circling visibility C and D ½ SM.</p>	MISSED APPROACH: Climb to 3500 direct PYLER and hold.

AWOS-3PT 118.975	SPRINGFIELD APP CON 121.1 290.5	CLNC DEL 123.725	UNICOM 122.8 (CTAF) 0
---------------------	------------------------------------	---------------------	--------------------------



<div>3500 ↑ PYLER </div>		<div>WIKGI 4 NM Holding Pattern 359° → 6000 ← 179° 3500</div>		
<div>RW18 1.2 NM to RW18 </div>		<div>AAMBR 2700 2700 179° GP 3.00° TCH 40</div>		
<div>1.2 NM</div>		<div>3 NM</div>	<div>5.8 NM</div>	
CATEGORY	A	B	C	D
LNAV/VNAV DA	1634-1 318 (400-1)			
LNAV MDA	1740-1	424 (500-1)	1740-1¼	424 (500-1¼)
CIRCLING	1780-1 459 (500-1)	1860-1 539 (600-1)	1980-1¾ 659 (700-1¾)	1980-2 659 (700-2)

NC-3, 07 AUG 2025 to 04 SEP 2025

NC-3, 07 AUG 2025 to 04 SEP 2025