

APP CRS  
079°

Rwy Idg  
TDZE  
Apt Elev

5001  
350  
355

RNAV (GPS) RWY 8

J LYNN HELMS SEVIER COUNTY (DEQ)

RNP APCH-GPS.

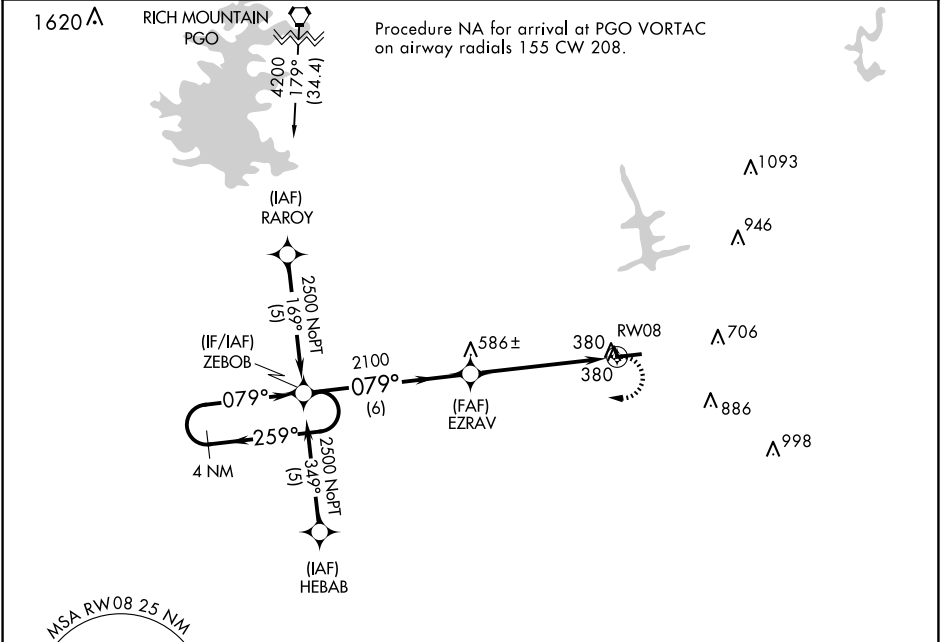
When local altimeter setting not received, use TXK altimeter and increase all MDAs 100 feet. Rwy 8 helicopter visibility reduction below 3/4 SM NA. Circling Rwy 26 NA at night.

MISSED APPROACH: Climbing right turn to 2500 direct ZEBOB and hold.

ASOS  
134.075

FORT WORTH CENTER  
123.925 269.475

UNICOM  
122.8 (CTAF) 0



ELEV 355

TDZE 350

4 NM Holding Pattern

ZEBOB

2500

2500

259°

079°

EZRAV

2100

3.05°

TCH 45

RW08

6 NM

5.3 NM

2500

ZEBOB

5001 X 75

26

079°

CATEGORY	A	B	C	D
LNAV MDA	780-1	430 (500-1)	NA	NA
CIRCLING	900-1 545 (600-1)	920-1 565 (600-1)	NA	NA

REIL Rwy 8 and 26 0

MIRL Rwy 8-26 0