

VORTAC RSG	APP CRS	Rwy Idg	3772
114.55	111°	TDZE	2372
Chan 92(Y)		Apt Elev	2372

VOR RWY 14

EDWARDS COUNTY (ECU)

⚠

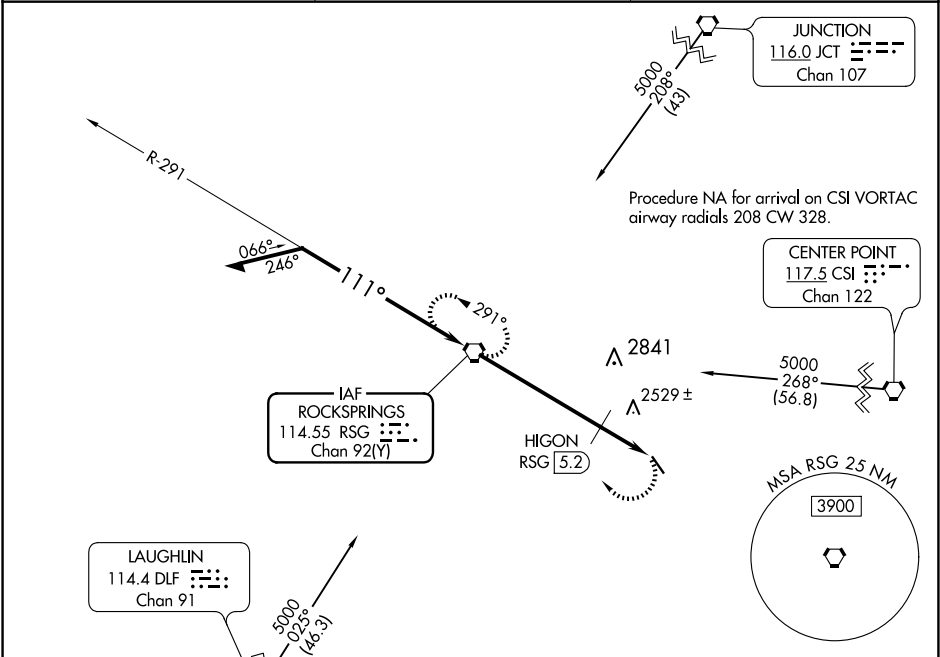
When local altimeter setting not received, use Kimble County altimeter setting and increase all MDAs 180 feet. Procedure NA at night.

⚠

Rwy 14 helicopter visibility reduction below 1 SM NA.

MISSED APPROACH: Climbing right turn to 5000 direct RSG VORTAC and hold, continue climb-in-hold to 5000.

AWOS-3	DEL RIO APP CON ★	CTAF
118.175	119.6 259.1	122.9



ELEV 2372		TDZE 2372	
Remain within 10 NM		Visual Segment - Obstacles.	
5000		* HIGON RSG 5.2	
*3040 when using Kimble County altimeter setting.		RSG 7.5	
291°		2.3 NM	
111°		2860	
4800		5.2 NM	
CATEGORY	A	B	D
S-14	2860-1	488 (500-1)	2860-1¼ 488 (500-1¼)
CIRCLING	2860-1	488 (500-1)	2860-1½ 488 (500-1½)
HIGON FIX MINIMUMS			
S-14	2780-1	408 (500-1)	2780-1¼ 408 (500-1¼)
CIRCLING	2800-1 428 (500-1)	2840-1 468 (500-1)	2840-1½ 468 (500-1½)

MIRL Rwy 14-32

FAF to MAP 7.5 NM

Knots	60	90	120	150	180
Min:Sec	7:30	5:00	3:45	3:00	2:30