

VOR/DME JVL	APP CRS	Rwy Idg	5000
114.3	276°	TDZE	1070
Chan 90		Apt Elev	1086

VOR/DME RWY 30

MONROE MUNI (EFT)

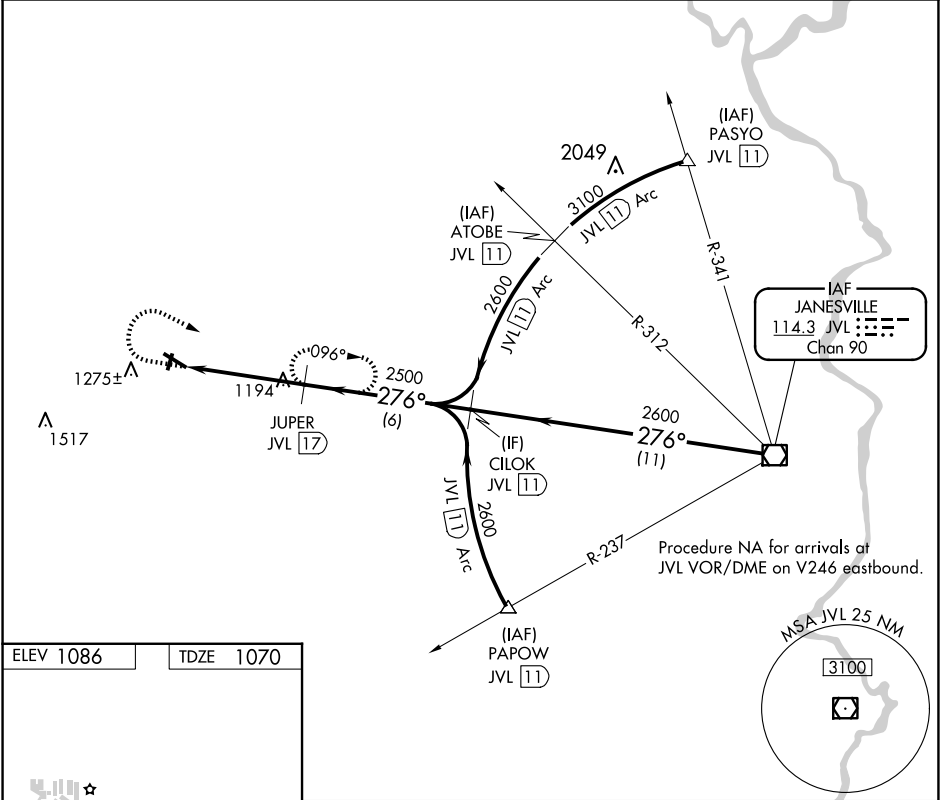
▼

▲

When local alimeter setting not received, use Albertus alimeter setting and increase all MDA 100 feet, increase Circling Cat C visibility ¼ mile.
Rwy 30 helicopter visibility reduction below ¾ SM NA. Circling to Rwy 2-20 NA at night.

MISSED APPROACH: Climb to 1800 then climbing right turn to 2600 on JVL VOR/DME R-276 to JUPER/JVL 17 DME and hold.

AWOS-3 118.375	ROCKFORD APP CON 126.0 327.0	UNICOM 123.05 (CTAF) 0
-------------------	---------------------------------	---------------------------



ELEV 1086 TDZE 1070

MIRL Rwy 12-30 and 2-20 0
REIL Rwy 2, 12, 20 and 30 0

	1800	2600	JUPER JVL 17	JVL R-276	JVL VOR/DME
			JUPER JVL 17	CILOK JVL 11	2700
			JVL 21.3	2500	2600
			3.04° TCH 42		
			4.3 NM	6 NM	11 NM
CATEGORY	A	B	C	D	
S-30	1460-1 390 (400-1)	1460-1¼ 390 (400-1½)	1460-1½ 390 (400-1½)	1460-1¾ 390 (400-1¾)	
CIRCLING	1540-1 454 (500-1)	1640-1 554 (600-1)	1640-1½ 554 (600-1½)	1640-2 554 (600-2)	

EC-3, 07 AUG 2025 to 04 SEP 2025

EC-3, 07 AUG 2025 to 04 SEP 2025