

APP CRS	Rwy Idg	5000
301°	TDZE	1070
	Apt Elev	1086

RNAV (GPS) RWY 30

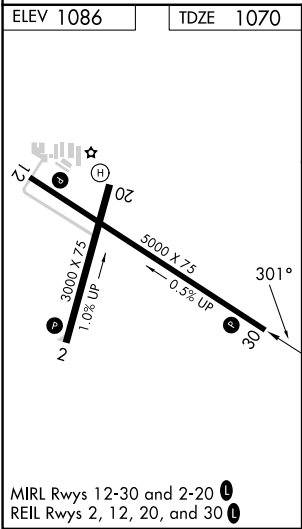
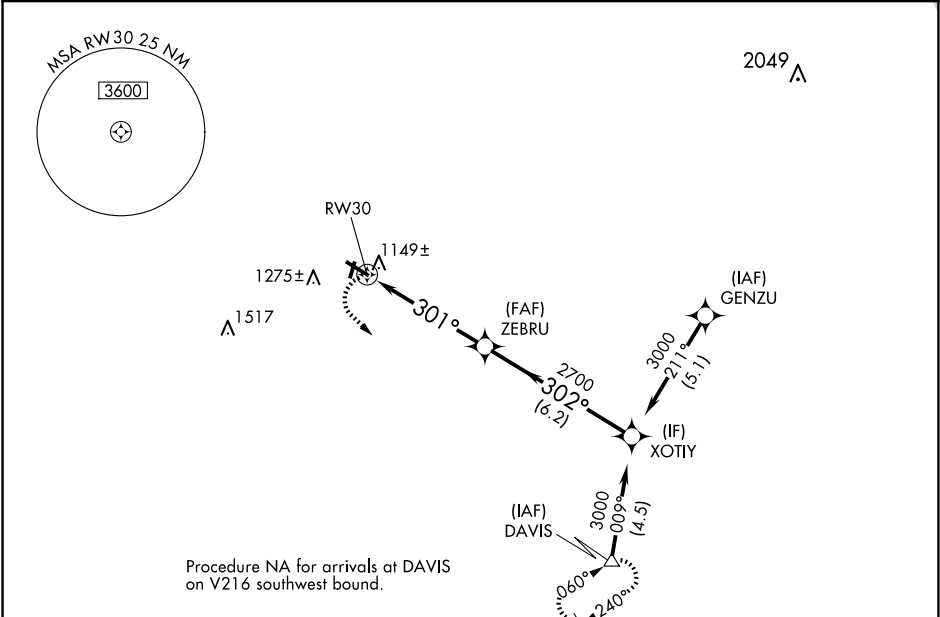
MONROE MUNI (EFT)

RNP APCH-GPS.

When local altimeter setting not received, use Albetus altimeter setting and increase all MDA 100 feet, increase LNAV Cat C/D and Circling Cat C visibility ¼ mile.
VDP NA when using Albetus altimeter setting. Rwy 30 helicopter visibility reduction below ¾ SM NA. Circling to Rwy 2-20 NA at night.

MISSED APPROACH:
Climbing left turn to 3000
direct DAVIS and hold.

AWOS-3 118.375	ROCKFORD APP CON 126.0 327.0	UNICOM 123.05 (CTAF) 0
-------------------	---------------------------------	---------------------------



3000	DAVIS			XOTIY	3000
		ZEBRU		Procedure Turn NA	
1.2 NM to RW30		301°		302°	
RW30		2700			
1.2		3.8 NM		6.2 NM	
		3.04° TCH 42			
CATEGORY	A		B	C	D
LNAV MDA	1480-1 410 (400-1)		1480-1¼ 410 (400-1¼)		
CIRCLING	1540-1 454 (500-1)	1640-1 554 (600-1)	1640-1½ 554 (600-1½)	1640-2 554 (600-2)	