

APP CRS
121°

Rwy Idg
TDZE **1086**
Apt Elev **1086**

RNAV (GPS) RWY 12

MONROE MUNI (EFT)

RNP APCH-GPS.

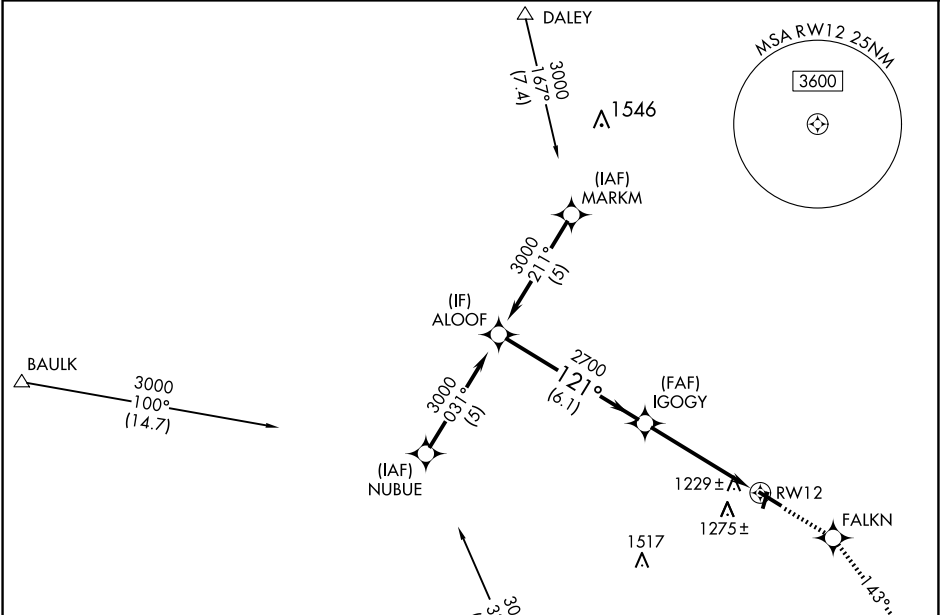
V

A

VDP NA when using Albetus altimeter setting. When local altimeter setting not received, use Albetus altimeter setting and increase all MDA 100 feet, increase LNAV Cat C/D and Circling Cat C visibility ¼ mile. Rwy 12 helicopter visibility reduction below ¾ SM NA. Circling to Rwy 2-20 NA at night.

MISSED APPROACH:
Climb to 3000 direct FALKN and on track 143° to DAVIS and hold.

AWOS-3 118.375	ROCKFORD APP CON 126.0 327.0	UNICOM 123.05 (CTAF) 0
--------------------------	--	----------------------------------



ELEV 1086

TDZE 1086

121°

20

30

3000 X 75

5000 X 75

1.0% UP

0.5% UP

MIRL Rwy 12-30 and 2-20 0
REIL Rwy 2, 12, 20 and 30 0

Procedure Turn NA	ALOOF	3000	121°	IGOGY	2700	3.04° TCH 40	1.1 NM to RWY 12	RWY 12	1.1
		6.1 NM			3.8 NM				
CATEGORY	A	B	C	D					
LNAV MDA	1480-1	394 (400-1)	1480-1¼	394 (400-1¼)					
CIRCLING	1540-1 454 (500-1)	1640-1 554 (600-1)	1640-1½ 554 (600-1½)	1640-2 554 (600-2)					

EC-3, 07 AUG 2025 to 04 SEP 2025

EC-3, 07 AUG 2025 to 04 SEP 2025