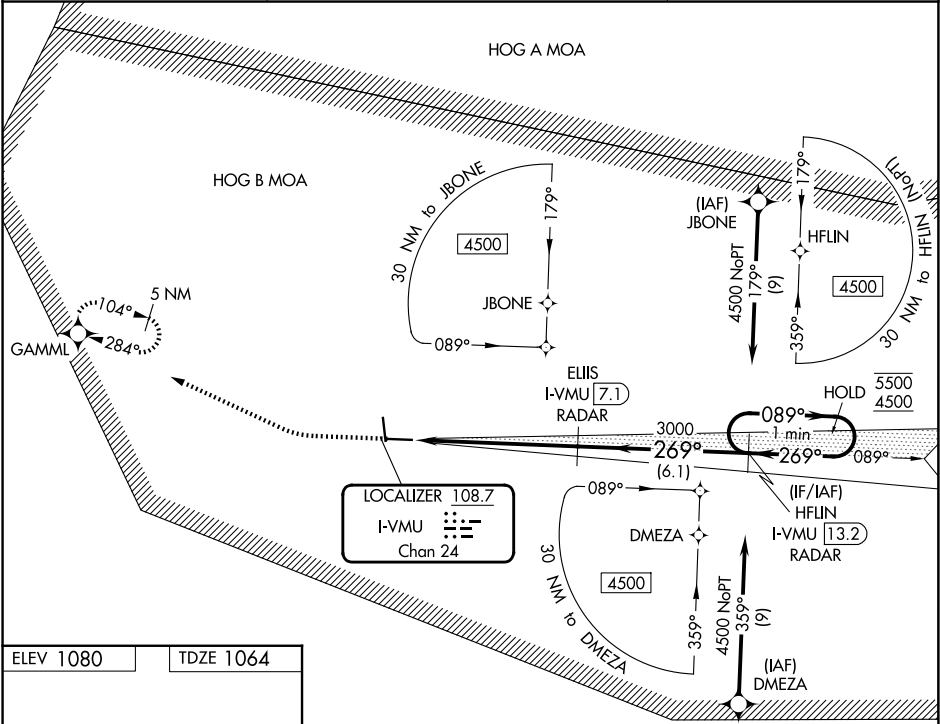


LOC/DME I-VMU 108.7 Chan 24	APP CRS 269°	Rwy Ldg 5485 TDZE 1064 Apt Elev 1080
---	------------------------	---

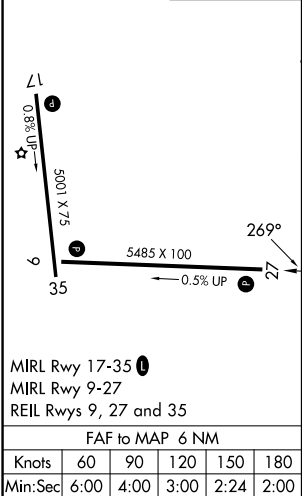
ILS or LOC RWY 27
MENA INTERMOUNTAIN MUNI (MEZ)

DME or RADAR required. RNP APCH - GPS.	MISSED APPROACH: Climb to 1800 then climbing right turn to 6000 direct GAMML and hold, continue climb-in-hold to 6000.
<div>▼ ▲</div> Circling Rwy 35 NA at night.	

AWOS-3 118.025	MEMPHIS CENTER 126.1 269.0	UNICOM 122.8 (CTAF) 0
--------------------------	--------------------------------------	---------------------------------



ELEV 1080	TDZE 1064
-----------	-----------



	1800	6000	GAMML	VGSI and ILS glidepath not coincident (VGSI Angle 3.00/TCH 49).
				HFLIN I-VMU 13.2 One Minute Holding Pattern
				ELIIS I-VMU 7.1
				I-VMU 2.8
				I-VMU 1.1
				3000
				3000
				3000
				1.6 NM 4.3 NM 6.1 NM
CATEGORY	A	B	C	D
S-ILS 27	1502-1¼	438 (500-1¼)		NA
S-LOC 27	1620-1	556 (600-1)	1620-1½ 556 (600-1½)	NA
CIRCLING	1840-1 760 (800-1)	2140-1½ 1060 (1100-1½)	2220-3 1140 (1200-3)	NA