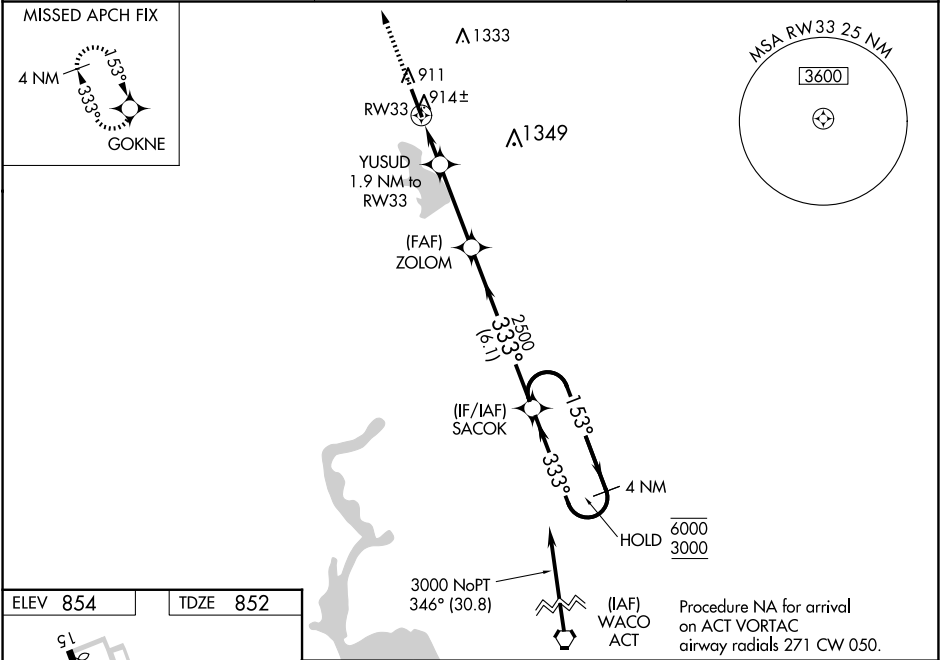


WAAS CH 82632 W33A	APP CRS 333°	Rwy Idg TDZE Apt Elev	5697 852 854
--	------------------------	-----------------------------	---

RNAV (GPS) RWY 33
CLEBURNE RGNL (CPT)

RNP APCH.	MISSED APPROACH: Climb to 3000 direct GOKNE and hold.
▼ For uncompensated Baro-VNAV systems, LNAV/VNAV NA below -16°C or above 54°C. Rwy 33 helicopter visibility reduction below ¾ SM NA. ▲	

AWOS-3 119.525	LONE STAR APP CON 135.975 379.9	UNICOM 122.8 (CTAF) 0
--------------------------	---	---------------------------------



ELEV 854	TDZE 852
-----------------	-----------------

