

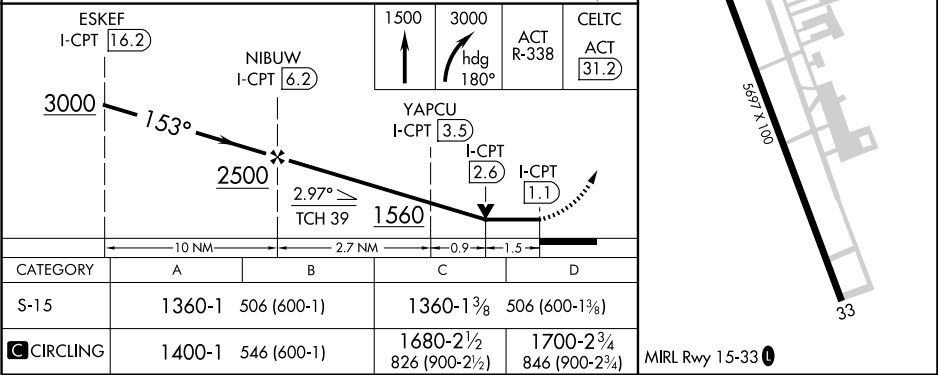
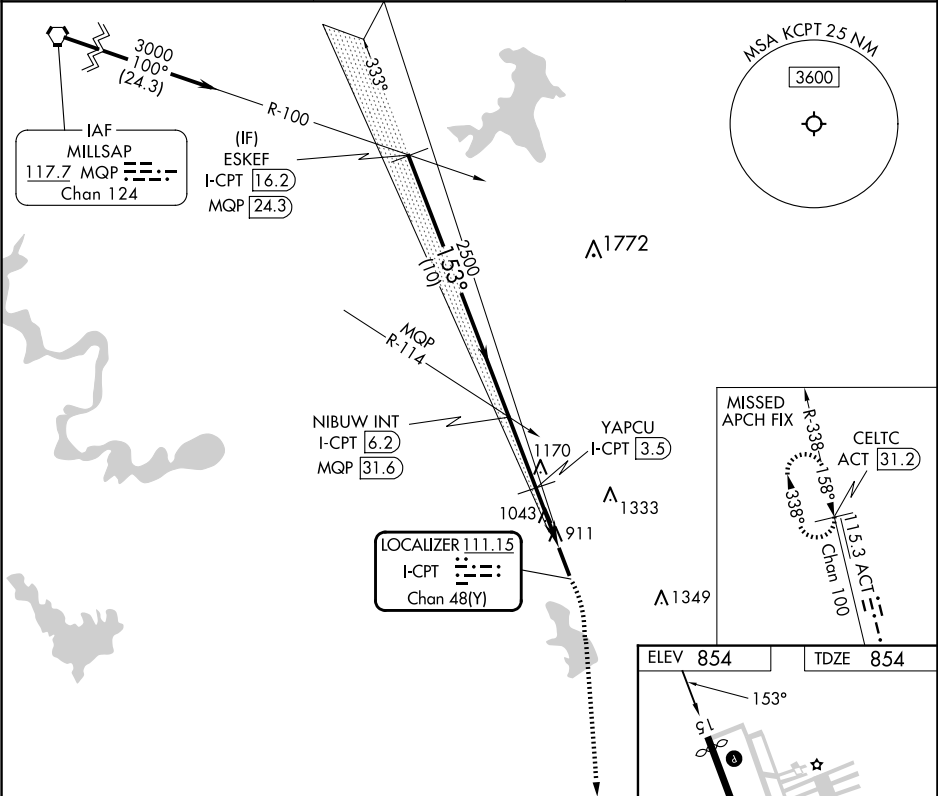
LOC I-CPT 111.15 Chan 48(Y)	APP CRS 153°	Rwy Idg TDZE Apt Elev	5512 854 854
---	------------------------	-----------------------------	---

LOC RWY 15

CLEBURNE RGNL (CPT)

DME required.	MISSED APPROACH: Climb to 1500 then climbing right turn to 3000 on heading 180° and ACT VORTAC R-338 to CELTC/ACT 31.2 DME.
NA Rwy 15 helicopter visibility reduction below ¾ SM NA.	

AWOS-3 119.525	LONE STAR APP CON 135.975 379.9	UNICOM 122.8 (CTAF) 0
--------------------------	---	---------------------------------



SC-2, 07 AUG 2025 to 04 SEP 2025

SC-2, 07 AUG 2025 to 04 SEP 2025