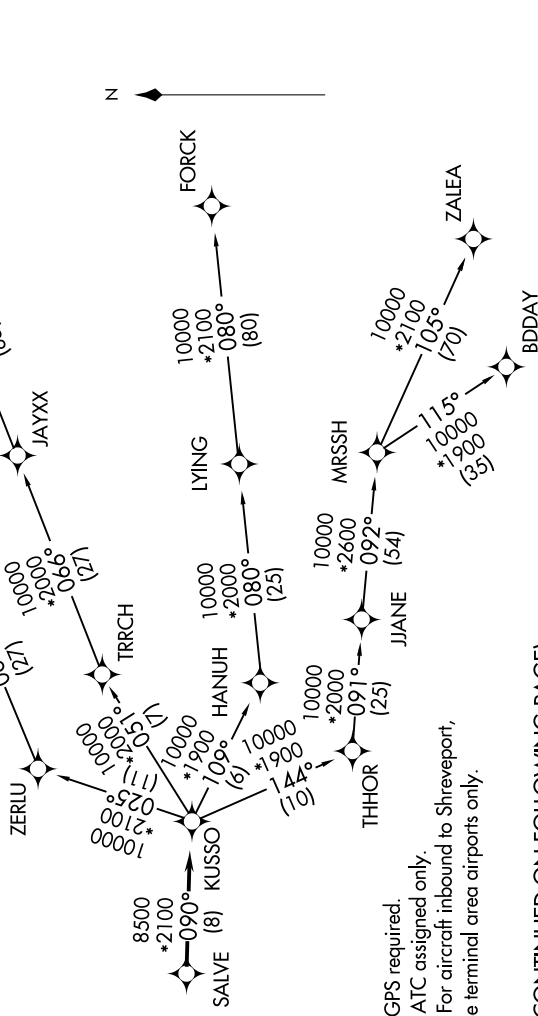


SC-2, 07 AUG 2025 to 04 SEP 2025

LONE STAR DEP CON  
135.975 379.9  
CTAF  
122.8

TOP ALTITUDE:  
ASSIGNED BY ATC

TAKEOFF MINIMUMS  
Rwy 15: Standard.  
Rwy 33: 300-1½ or standard with minimum  
climb of 422' per NM to 1200.



NOTE: RADAR required.  
NOTE: RNAV 1.  
NOTE: DME/DME/IRU or GPS required.  
NOTE: BDDAY Transition: ATC assigned only.  
NOTE: MRSSH Transition: For aircraft inbound to Shreveport,  
Jackson and Monroe terminal area airports only.

(CONTINUED ON FOLLOWING PAGE)

NOTE: Chart not to scale.

SC-2, 07 AUG 2025 to 04 SEP 2025