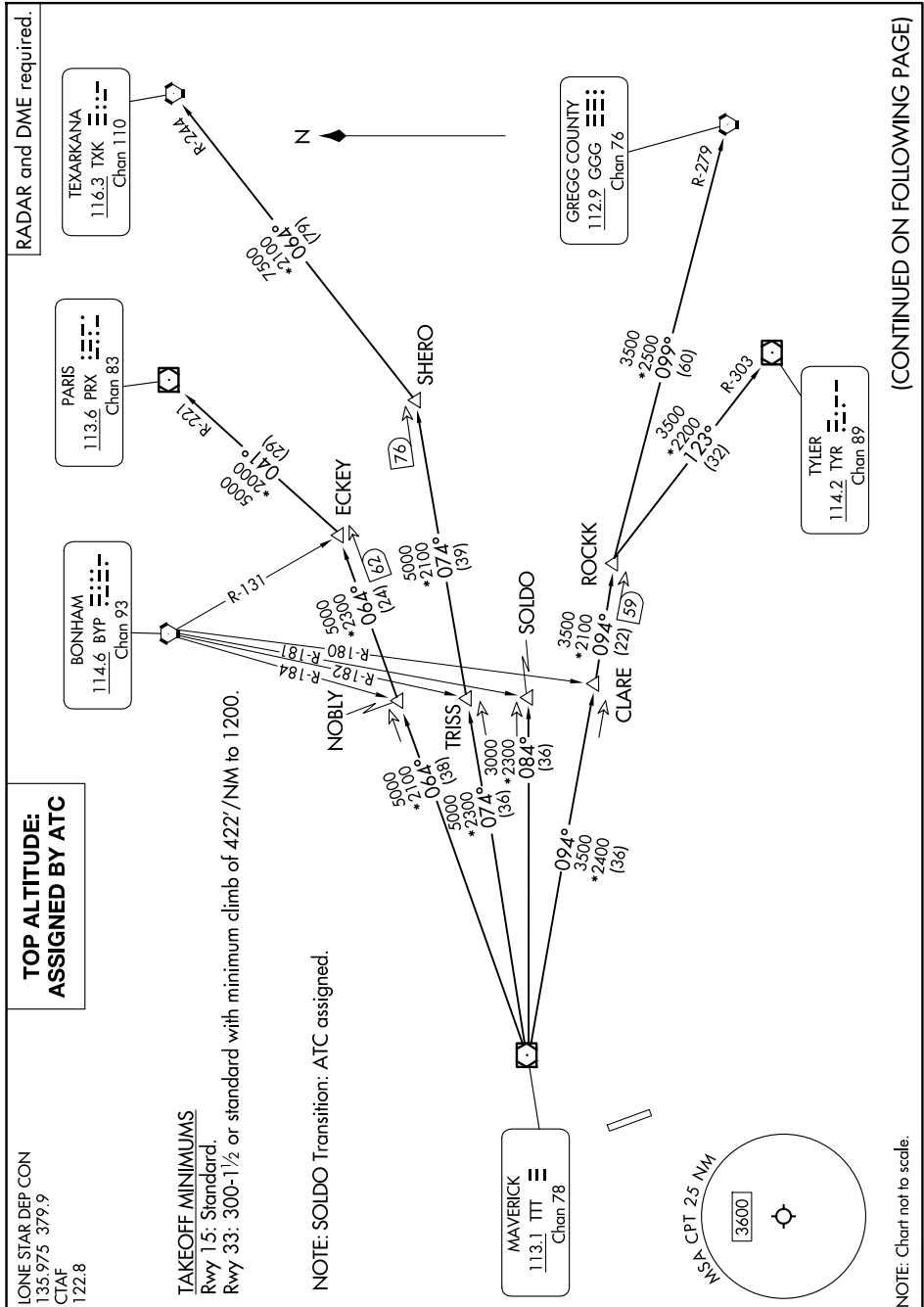


GARLAND SIX DEPARTURE



**TOP ALTITUDE:
ASSIGNED BY ATC**

LONE STAR DEP CON
 135.975 379.9
 CTAF
 122.8

TAKEOFF MINIMUMS

Rwy 15: Standard.

Rwy 33: 300-1½ or standard with minimum climb of 422'/NM to 1200.

NOTE: SOLDO Transition: ATC assigned.

NOTE: Chart not to scale.

(CONTINUED ON FOLLOWING PAGE)