

WAAS CH 63239 W11A	APP CRS 110°	Rwy Idg TDZE 4979 Apt Elev 413
--	------------------------	--

RNAV (GPS) RWY 11

POTOMAC AIRPARK (W35)

RNP APCH.

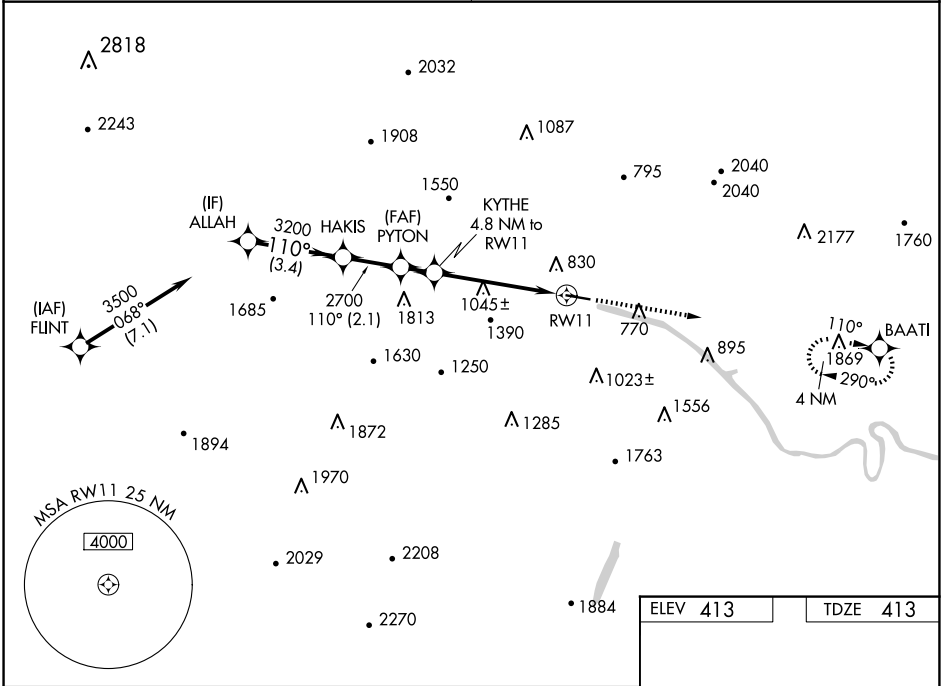
▼

NA

Procedure NA at night. Rwy 11 helicopter visibility reduction below 1 SM NA. Obtain local altimeter setting on CTAF; when not received, use Martinsburg altimeter setting and increase all MDAs 80 feet and increase LNAV and LP Cat B, C and D visibilities ½ SM and increase Circling Cat B visibility ¼ SM.

MISSED APPROACH:
Climb to 3500 direct BAATI and hold.

POTOMAC APP CON 126.825 239.025	CTAF 122.9
---	----------------------



Visual Segment - Obstacles.

3500

BAATI

ALLAH

HAKIS

PYTON

KYTHE
4.8 NM to RW11

RW11

3500

3200

2700

2240

110°

110°

3.4 NM

2.1 NM

1.2 NM

4.8 NM

CATEGORY	A	B	C	D
LP MDA	1300-1¼	887 (900-1¼)	1300-2½	887 (900-2½)
LNAV MDA	1340-1¼	927 (1000-1¼)	1340-2½	927 (1000-2½)
CIRCLING	1340-1¼	927 (1000-1¼)	1700-3 1287 (1300-3)	1780-3 1367 (1400-3)

MRL Rwy 11-29