

WAAS CH 50405 W25A	APP CRS 253°	Rwy Idg TDZE 891 Apt Elev 891
--	------------------------	---

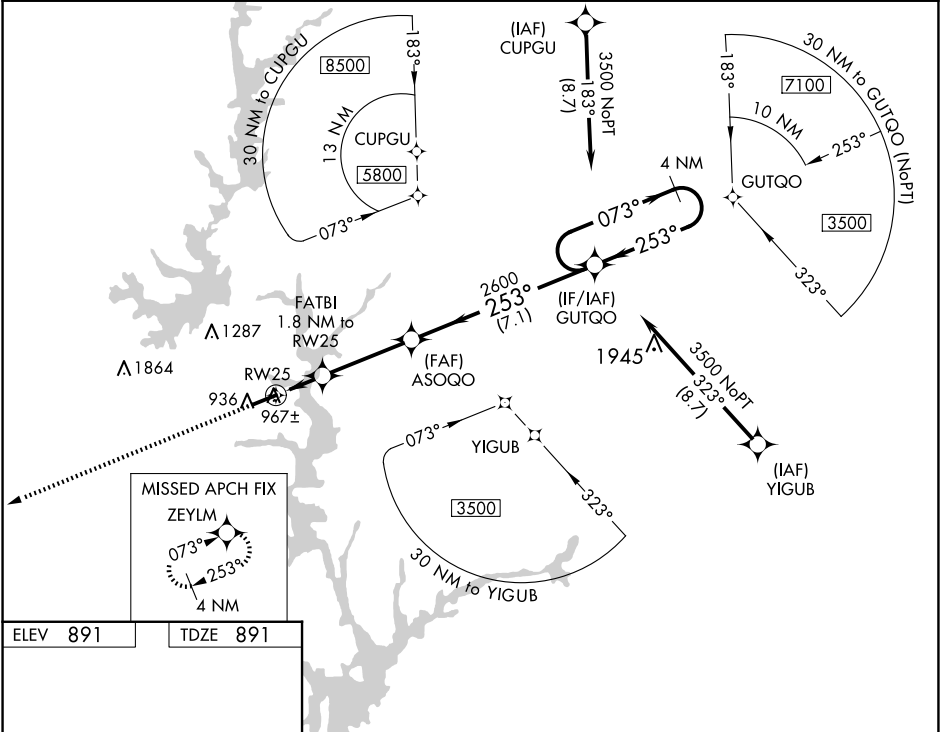
RNAV (GPS) RWY 25

OCONEE COUNTY RGNL (CEU)

For uncompensated Baro-VNAV systems, LNAV/VNAV NA below -6°C (22°F) or above 54°C (130°F). DME/DME RNP-0.3 NA. When local altimeter setting not received, use Anderson altimeter setting and increase all DA 47 feet and all MDA 60 feet; increase LPV all Cats, and LNAV Cat C visibility ½ mile; increase LNAV/VNAV all Cats visibility ¼ mile. Baro-VNAV and VDP NA when using Anderson altimeter setting.

MISSED APPROACH: Climb to 3000 direct ZEYLM and hold.

ASOS 119.275	GREER APP CON★ 118.8 270.275	UNICOM 122.7 (CTAF) 0
------------------------	--	---------------------------------



ELEV 891	TDZE 891	3000 ZEYLM			
MIRL Rwy 7-25 0		*LNAV only.			
REIL Rwy 7 and 25 0		*1 NM to RW25			
		1 NM 0.8 3.4 NM 7.1 NM			
		A B C D			
		LPV DA 1091-3/4 200 (200-3/4) NA			
		LNAV/VNAV DA 1141-7/8 250 (300-7/8) NA			
		LNAV MDA 1220-1 329 (400-1) NA			
		CIRCLING 1300-1 1360-1 1640-2 1/4 NA			
		409 (500-1) 469 (500-1) 749 (800-2 1/4)			