

WAAS CH 87038 W19A	APP CRS 188°	Rwy Idg 4346 TDZE 685 Apt Elev 685
--	------------------------	---

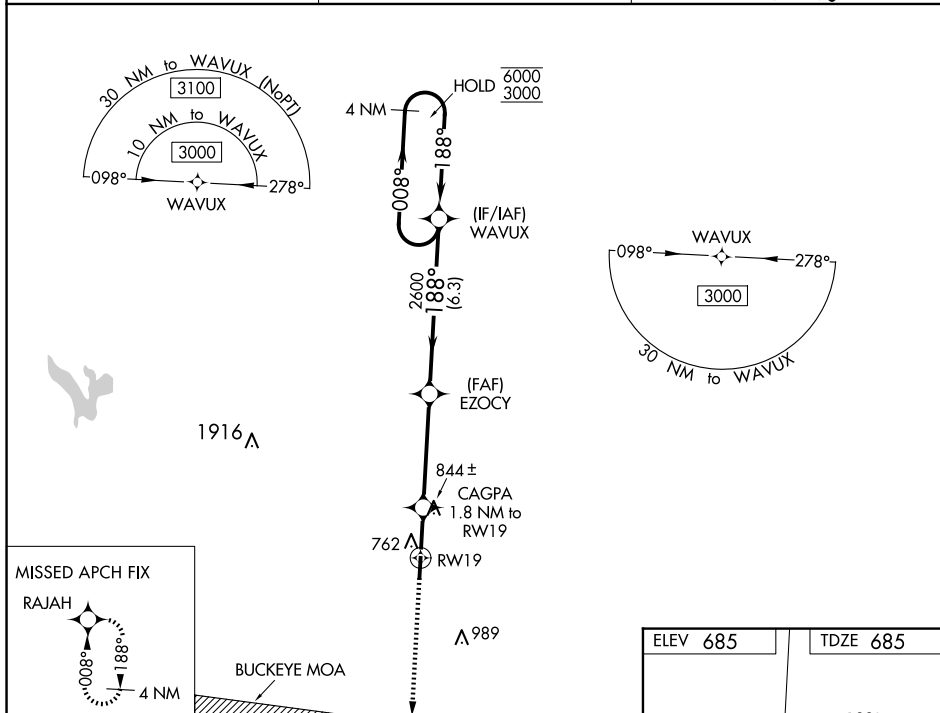
RNAV (GPS) RWY 19
PICKAWAY COUNTY MEML (CYO)

RNP APCH

T Baro-VNAV and VDP NA when using Rickenbacker Intl altimeter setting. For uncompensated Baro-VNAV systems, LNAV/VNAV NA below -18°C or above 54°C. Use Chillythe altimeter setting, when not received use Rickenbacker Intl altimeter setting and increase LPV DA to 985 feet, LNAV/VNAV DA to 1150 feet, and all visibilities ¼ SM. Increase all MDAs 60 feet and Cats C and D visibility ¼ SM. Circling Rwy 1 NA at night. Rwy 19 helicopter visibility reduction below ¾ SM NA.

MISSED APPROACH:
Climb to 3000 direct
RAJAH and hold.

RZT AWOS-3 119.225	COLUMBUS APP CON 134.0 279.6	UNICOM 122.7 (CTAF) 0
------------------------------	--	---------------------------------



3000 RAJAH VGSi and RNAV glidepath not coincident (VGSi Angle 3.00°/TCH 24). 4 NM Holding Pattern WAWUX

*LNAV only.

*1.2 NM to RW19 1.8 NM to RW19 CAGPA 2600 EZOCY 188° 008° 6000 3000

RW19 1280 2600 GP 3.00° TCH 40

1.2 NM 0.6 NM 4.1 NM 6.3 NM

CATEGORY	A	B	C	D
LPV DA	935-7/8	250 (300-7/8)		
LNAV/VNAV DA	1100-13/8	415 (500-13/8)		
LNAV MDA	1100-1 415 (500-1)	1100-1 1/8 415 (500-1 1/8)		
C CIRCLING	1180-1 495 (500-1)	1200-1 515 (600-1)	1300-13/4 615 (700-13/4)	1340-2 655 (700-2)

