

VOR/DME BSV
114.05
Chan **87** (Y)

APP CRS
127°

Rwy Idg
TDZE
Apt Elev **1164**

N/A
N/A
1164

VOR-A
CARROLL COUNTY-TOLSON (TSO)

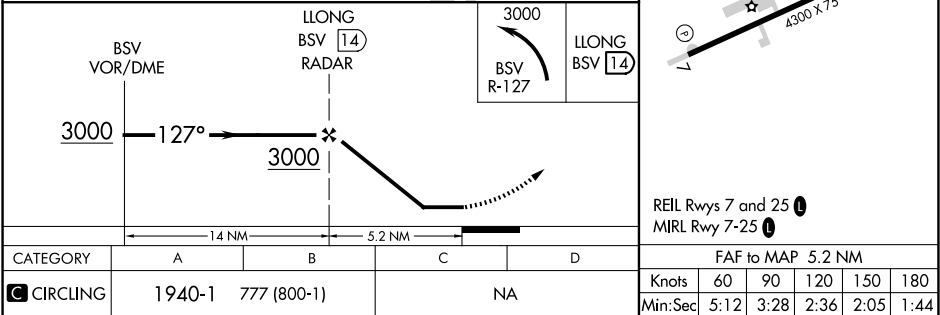
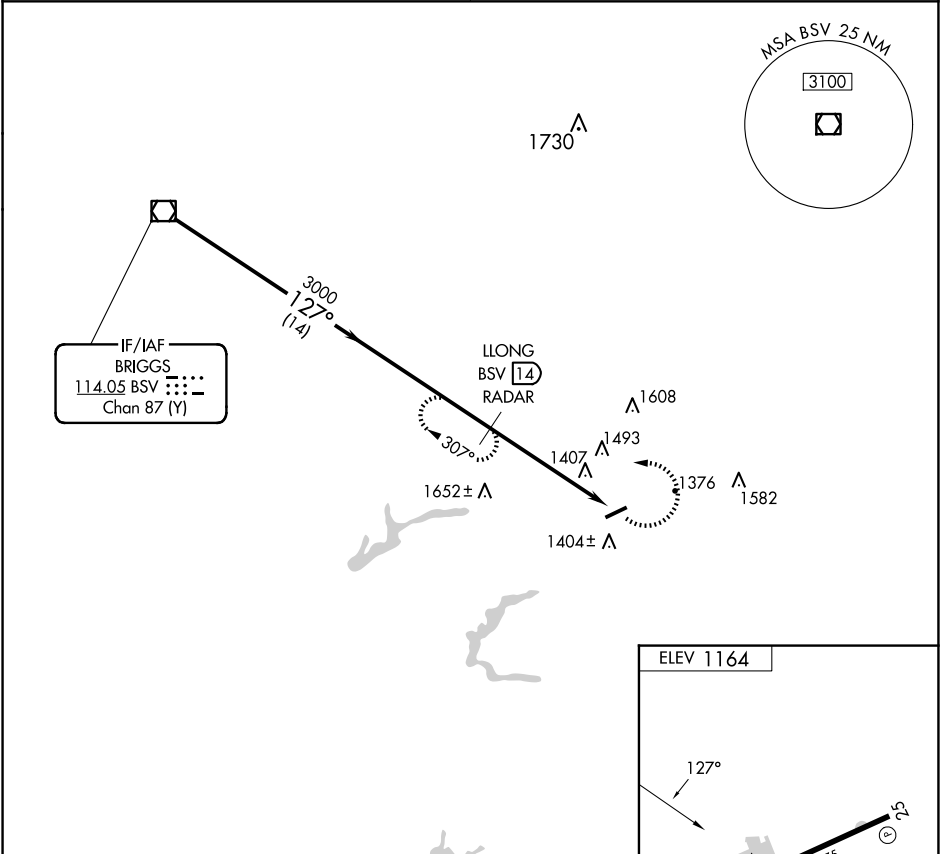
DME or RADAR required.

Procedure NA at night. Use Akron-Canton altimeter setting; when not received, use New Philadelphia altimeter setting and increase MDA 20 feet.

MISSED APPROACH: Climbing left turn to 3000 on BSV VOR/DME R-127 to LLONG/BSV 14 DME/RADAR and hold.

CLEVELAND APP CON★
125.5 371.875

UNICOM
122.7 (CTAF) **0**



EC-2, 07 AUG 2025 to 04 SEP 2025

EC-2, 07 AUG 2025 to 04 SEP 2025