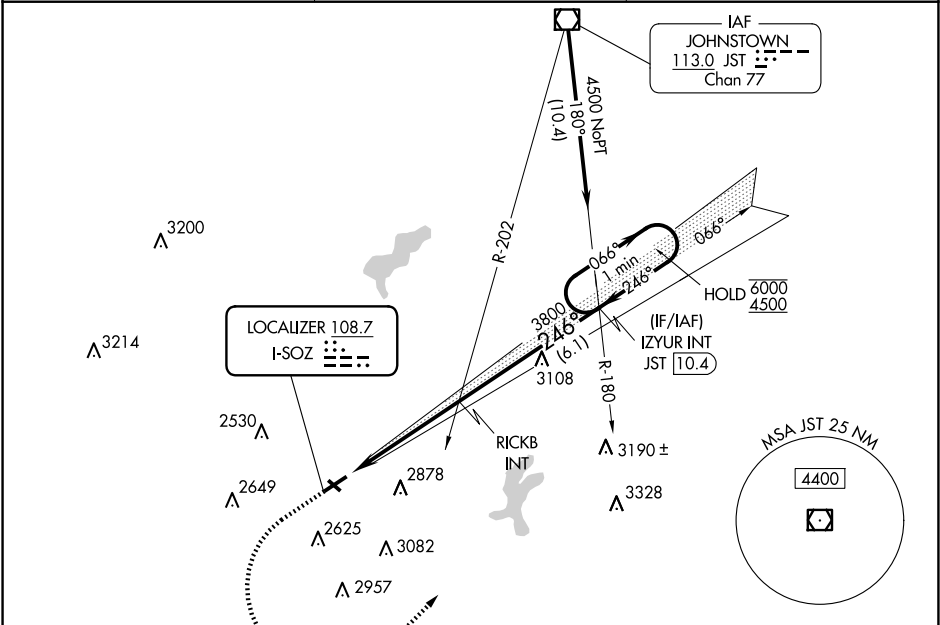


LOC I-SOZ 108.7	APP CRS 246°	Rwy Idg TDZE Apt Elev	5002 2240 2275
---------------------------	------------------------	-----------------------------	---

LOC RWY 25
SOMERSET COUNTY (2G9)

DME required.	MISSED APPROACH: Climb to 3400 then climbing left turn to 4500 on heading 055° and JST VOR/DME R-180 to IZYUR INT/JST 10.4 DME and hold.
<div><div>▼</div><div>▲</div></div> Rwy 25 helicopter visibility reduction below 1 SM NA. Circling NA to Rwys 14 and 32. Procedure NA at night.	

AWOS-3P 133.8	JOHNSTOWN APP CON ★ 121.2 299.2	UNICOM 122.8 (CTAF) 0
-------------------------	---	---------------------------------



ELEV 2275		TDZE 2240	
3400	4500	JST R-180	IZYUR INT
↑	hdg 055°		
RICKB INT		IZYUR INT JST 10.4	One Minute Holding Pattern
3800		066°	6000
246°		246°	4500
4.9 NM		6.1 NM	
CATEGORY	A	B	C
S-25	2860-1	620 (600-1)	2860-1¾ 620 (600-1¾)
CIRCLING	2860-1 585 (600-1)	2920-1 645 (700-1)	3520-3 1245 (1300-3)
MIRL Rwy 7-25 0			
REIL Rwys 7 and 25 0			
FAF to MAP 4.9 NM			
Knots	60	90	120 150 180
Min:Sec	4:54	3:16	2:27 1:58 1:38