

| | | |
|--|------------------------|--|
| WAAS CH 78228 W07A | APP CRS 071° | Rwy Idg TDZE 5001 775 Apt Elev 781 |
|--|------------------------|--|

RNAV (GPS) RWY 7

ROCHELLE MUNI/KORITZ FLD (RPJ)

RNP APCH - GPS.

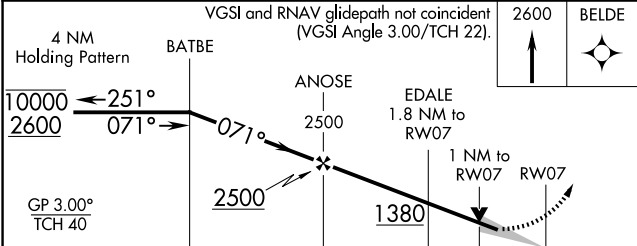
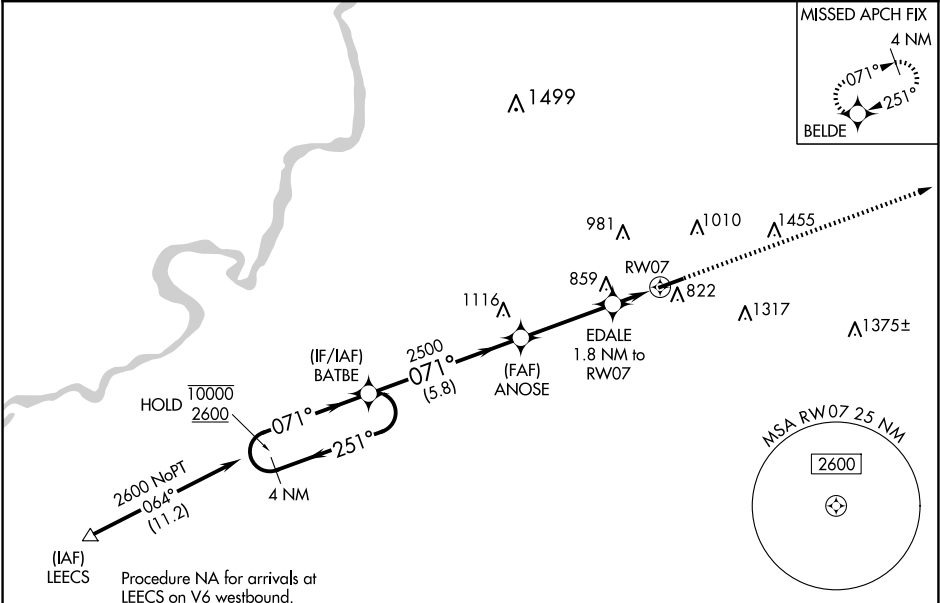
▼

Baro-VNAV NA when using Chicago/Rockford Intl altimeter setting. For uncompensated Baro-VNAV systems, procedure NA below -17°C or above 54°C. VDP NA when using Chicago/Rockford Intl altimeter setting. When local altimeter setting not received, use Chicago/Rockford Intl altimeter setting: increase all DA to 1073 feet and all MDA 60 feet; increase LNAV visibility Cats C/D ⅓ mile; increase Circling Cat C visibility ¼ mile.

MISSED APPROACH:

Climb to 2600 direct BELDE and hold.

| | | |
|------------------------|--|-----------------------------------|
| AWOS-3 125.2 | ROCKFORD APP CON 126.0 327.0 | UNICOM 122.975 (CTAF) 0 |
|------------------------|--|-----------------------------------|



| CATEGORY | A | B | C | D |
|--------------|-----------------------|-----------------------|-------------------------|-------------------------|
| LPV DA | | 1025-1 | 250 (300-1) | |
| LNAV/VNAV DA | | 1025-1 | 250 (300-1) | |
| LNAV MDA | | 1120-1 | 345 (400-1) | |
| CIRCLING | 1260-1 479 (500-1) | 1360-1 579 (600-1) | 1680-2¾ 899 (900-2¾) | 1820-3 1039 (1100-3) |

ELEV 781 TDZE 775

MIRL Rwy 7-25 0
REIL Rws 7 and 25 0