

WAAS CH 40328 W25A	APP CRS 251°	Rwly Idg TDZE 781 Apt Elev 781	5001
--	------------------------	--	-------------

RNAV (GPS) RWY 25

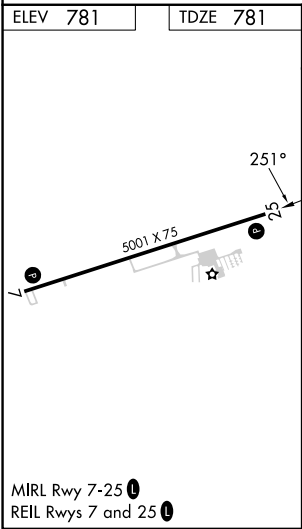
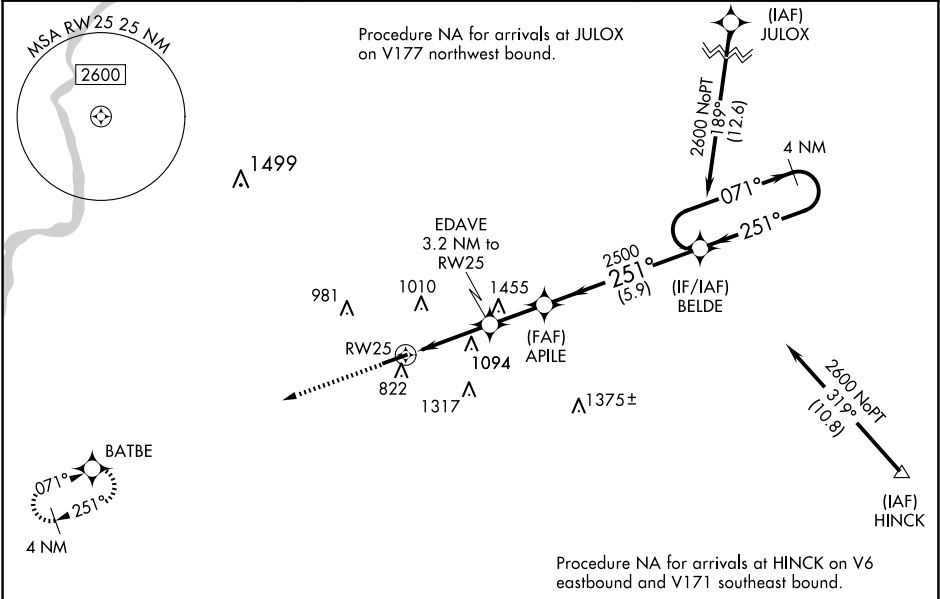
ROCHELLE MUNI/KORITZ FLD (RPJ)

⚠

Baro-VNAV NA when using Chicago/Rockford Intl altimeter setting. For uncompensated Baro-VNAV systems, LNAV/VNAV NA below -16°C (4°F) or above 54°C (130°F). DME/DME RNP-0.3 NA. When local altimeter setting not received, use Chicago/Rockford Intl altimeter setting: increase LPV DA to 1079 feet and LNAV/VNAV DA to 1152 feet and all MDA 60 feet; increase LNAV/VNAV visibility all Cats and LNAV Cat C/D visibility ½ mile; increase Circling Cat C visibility ¼ mile. Helicopter visibility reduction below ¾ SM NA. VDP NA when using Chicago/Rockford Intl altimeter setting.

MISSED APPROACH:
Climb to 2600 direct
BATBE and hold.

AWOS-3 125.2	ROCKFORD APP CON 126.0 327.0	UNICOM 122.975 (CTAF) 0
------------------------	--	-----------------------------------



2600	BATBE	VGSI and RNAV glidepath not coincident (VGSI Angle 4.00/TCH 28).				4 NM
*LNAV only		EDAVE 3.2 NM to RW25	APILE 2500	BELDE	Holding Pattern	
*1.3 NM to RW25		*1840	2500	071°	2600	GP 3.00° TCH 40
1.3 NM		1.9 NM	2.1 NM	5.9 NM		
CATEGORY	A	B	C	D		
LPV DA	1031-1		250 (300-1)			
LNAV/VNAV DA	1104-1½		323 (400-1½)			
LNAV MDA	1360-1	579 (600-1)	1360-1½	579 (600-1½)		
CIRCLING	1360-1	579 (600-1)	1680-2¾ 899 (900-2¾)	1820-3 1039 (1100-3)		