

WAAS CH <b>82124</b> <b>W01A</b>	APP CRS <b>013°</b>	Rwy ldg TDZE <b>817</b> Apt Elev <b>817</b>
--	------------------------	---

RNAV (GPS) RWY 1

DOUGLAS HUNTER FLD (1M5)

RNP APCH.

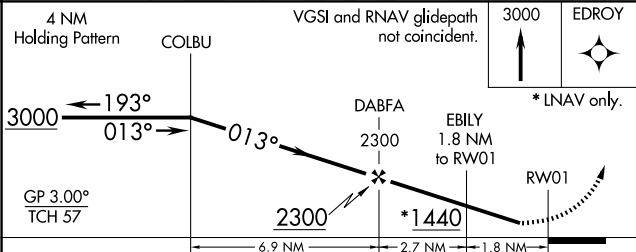
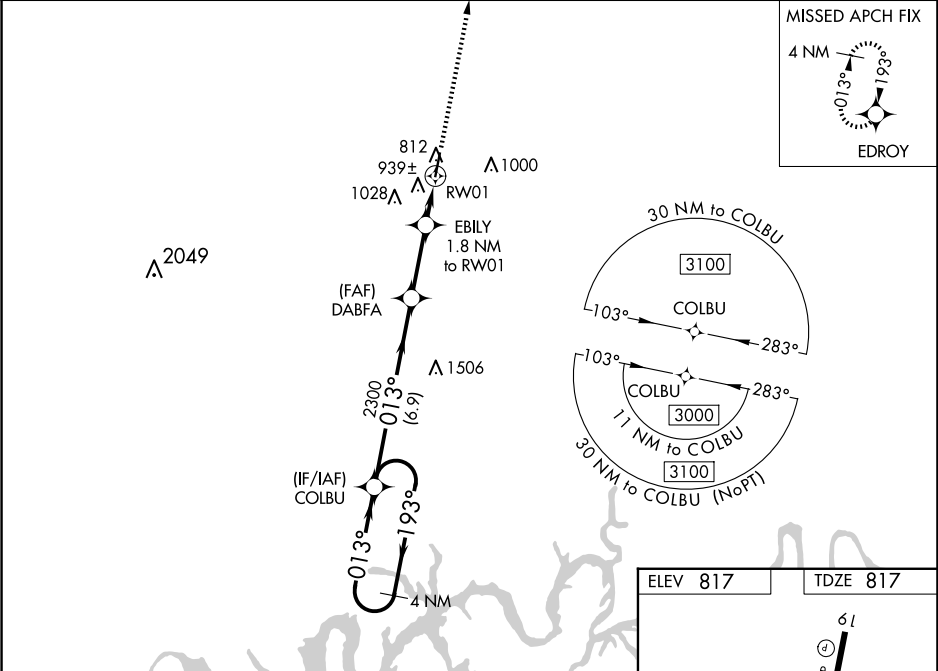
▽

⚠

Baro-VNAV NA when using Bowling Green altimeter setting. For uncompensated Baro-VNAV systems, LNAV/VNAV NA below -16°C or above 54°C. Rwy 1 helicopter visibility reduction below ¾ SM NA. When local altimeter setting not received, use Bowling Green altimeter setting and increase LPV DA to 1180 and all visibilities ⅓ mile; increase all LNAV/VNAV DA to 1210 and all visibilities ¼ mile; increase all MDA 100 feet and increase LNAV Cats C/D visibility ¼ mile.

MISSED APPROACH: Climb to 3000 direct EDROY and hold.

AWOS-3PT <b>118.175</b>	NASHVILLE APP CON <b>119.35 372.0</b>	UNICOM <b>122.975 (CTAF) 0</b>
----------------------------	--	-----------------------------------



CATEGORY	A	B	C	D
LPV DA	1090-1	273 (300-1)		
LNAV/VNAV DA	1120-1	303 (400-1)		
LNAV MDA	1200-1 383 (400-1)	1200-1½ 383 (400-1½)		

